

Drainage Services Flood Prevention Program

Lendrum Place
Proposed Dual-Use
Dry Pond / Playing Field

April 12, 2007

July 11, 2004 Flooding



July 11, 2004 Flooding

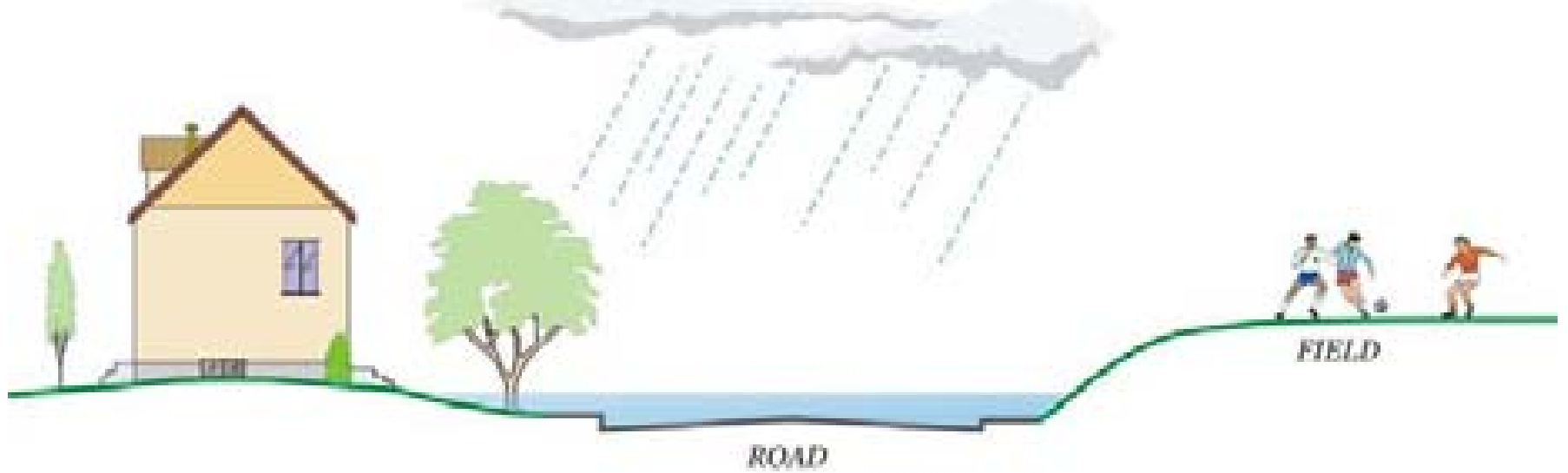


July 11, 2004 Flooding

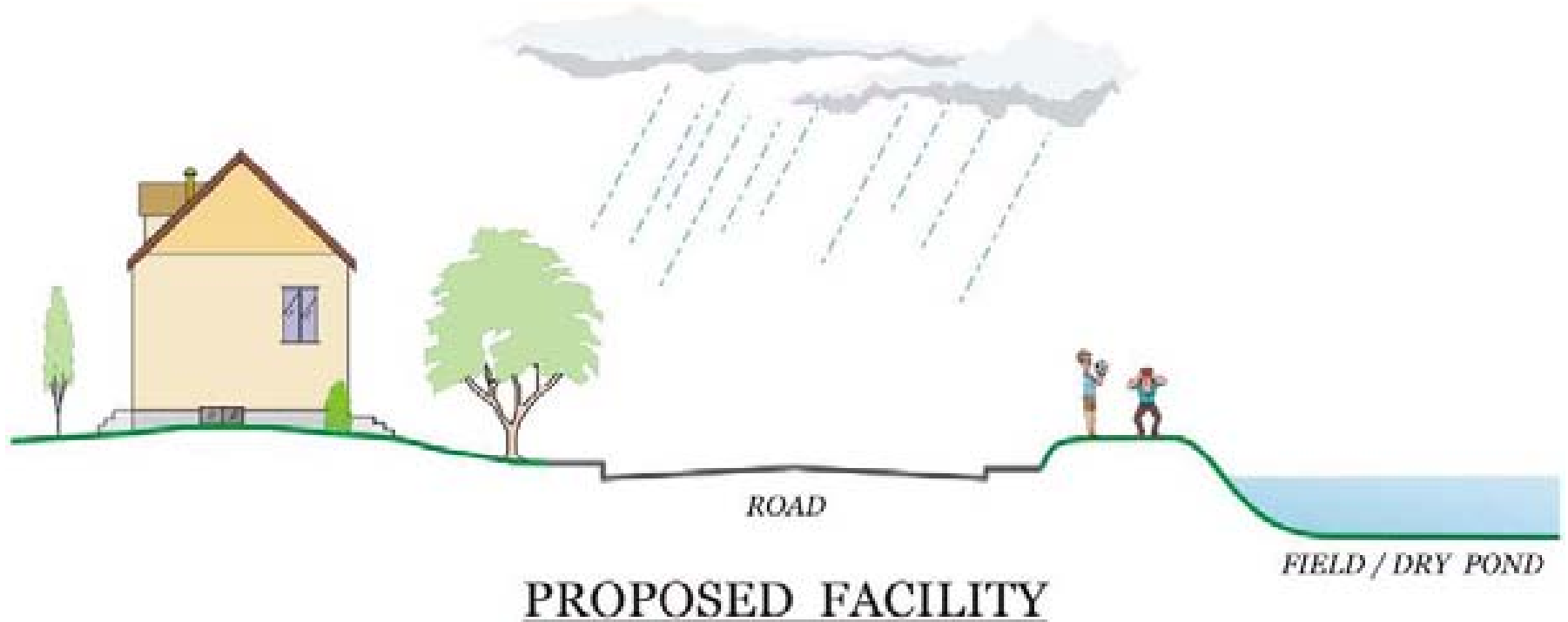


July 11, 2004 Flooding





CURRENT CONDITIONS



Lendrum School Site

City of Edmonton

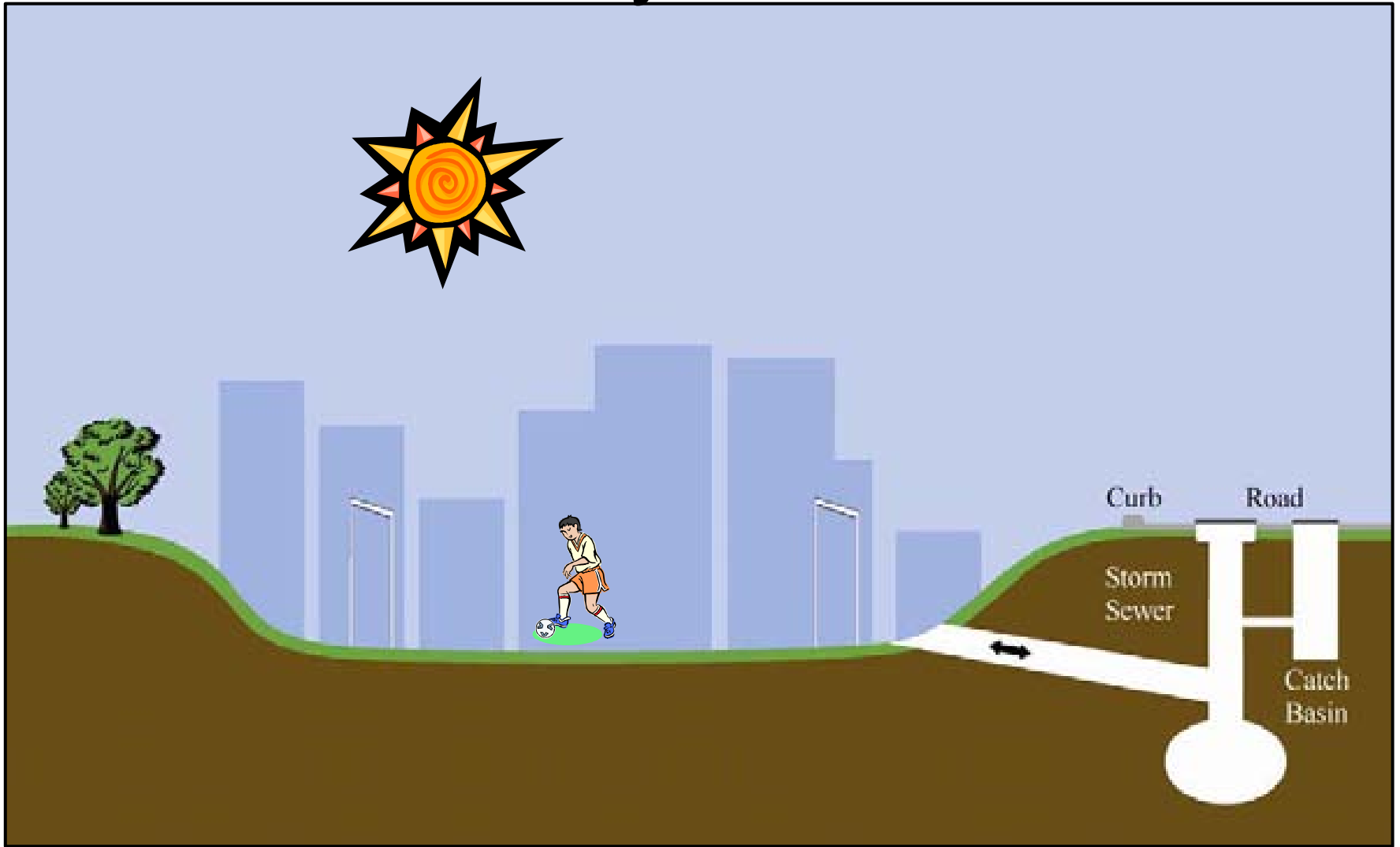


Lendrum School Site July 11, 2004

City of Edmonton



How Do Dry Ponds Work?



How Do Dry Ponds Work?



The logo for the City of Edmonton, featuring a stylized building with a glass facade and a blue sky, positioned vertically on the left side of the slide.

Safety

- Many safety features built in
 - gentle slopes, grated inlet/outlet, signage
 - risk moved from street to field
 - rapid drawdown and dry time
 - wet meadow cleans flow
 - ponding a rare occurrence
 - (storm sewers take most runoff)
 - remote monitoring (SCADA)
- Adult supervision – security guard
- Teacher support
- Post-event cleanup

What Do Dry Ponds Look Like?

City of Edmonton



What Do Dry Ponds Look Like?

City of Edmonton



What Do Dry Ponds Look Like?

City of Edmonton



What Do Dry Ponds Look Like?

City of Edmonton



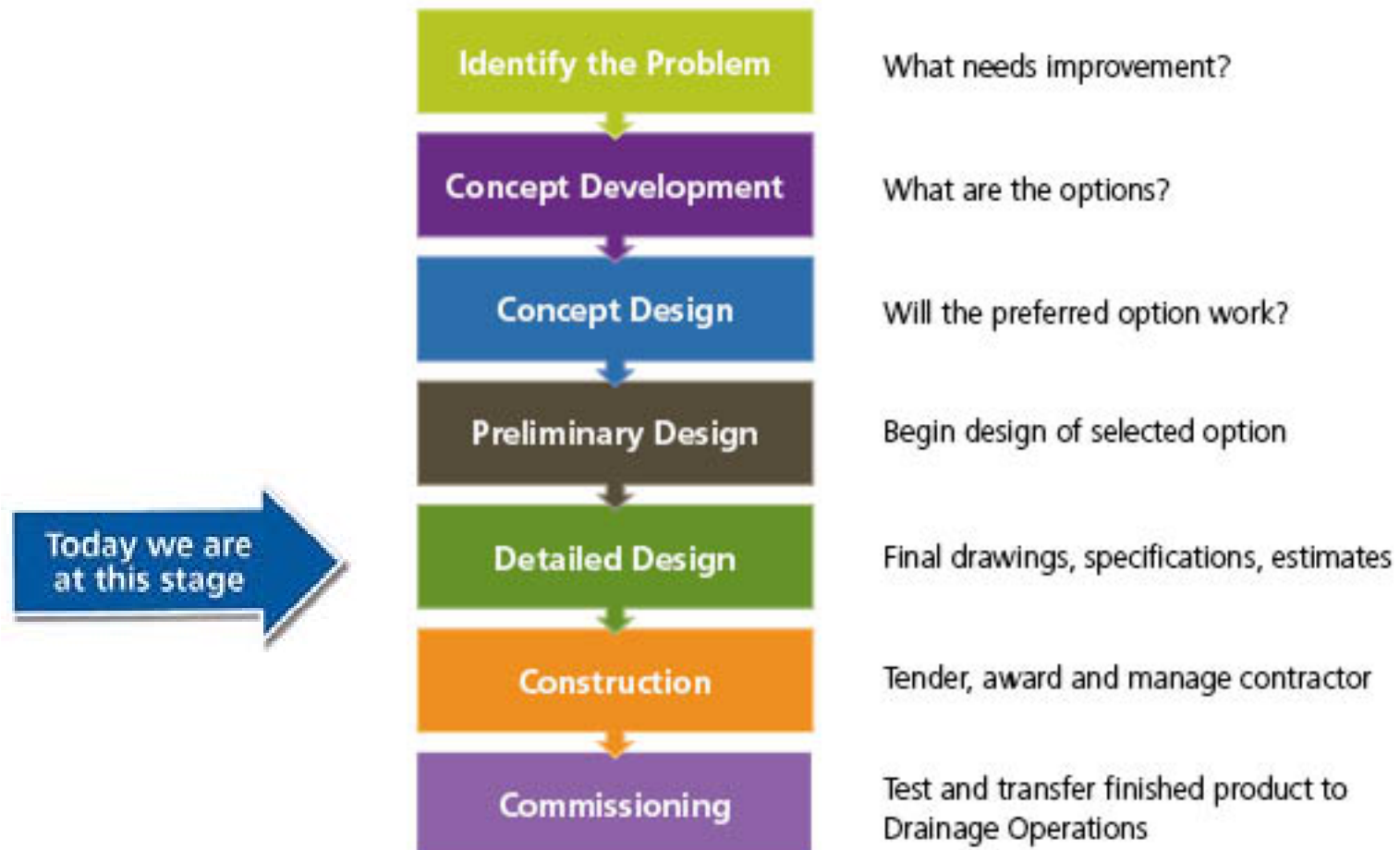
What Do Dry Ponds Look Like?

City of Edmonton



Drainage Services Engineering Project Life Cycle

Every engineering project goes through a number of stages before it is finally constructed and completed. At certain points in the project life cycle we would like your input before proceeding to the next stage.





Public Consultation (Lendrum Residents)

- 22 Sep 04 – Public Meeting (south Edm)
- 21 Mar 05 – Lendrum Public Meeting *
- 8 Nov 05 – Concept Design – Residents *
- 26 Oct 06 – Prelim. Design – Residents

* www.edmonton.ca/floodprevention



Stakeholder Consultation (Edmonton Public Schools)

- 23 Jan 06 – letter to EPS – agreement
- 24 Mar 06 – letter from EPS – issues
- 6 Sep 06 – City & EPS meet – issues
- 25 Sep 06 – meet with Principals
- 3 Oct 06 – letter to EPS – information
- 9 Oct 06 – School needs identified
- 29 Nov 06 – EPS & design team meet
- 19 Jan 07 – Joint Use Committee
- 22 Feb 07 – letter to EPS – agreement
- 28 Feb 07 – School staff & parent concerns
- 26 Mar 07 – letter from EPS - issues



Consultation (other Stakeholders)

- 6 Feb 06 – Community League Exec.
- 4 Aug 06 – Capital Health – in favour
- 2 Oct. 06 – Community League Exec.
- April 07 – request for final comments
 - Edmonton Public Schools
 - Community League
 - City Parks & Rec.

Proposed Dry Pond Design

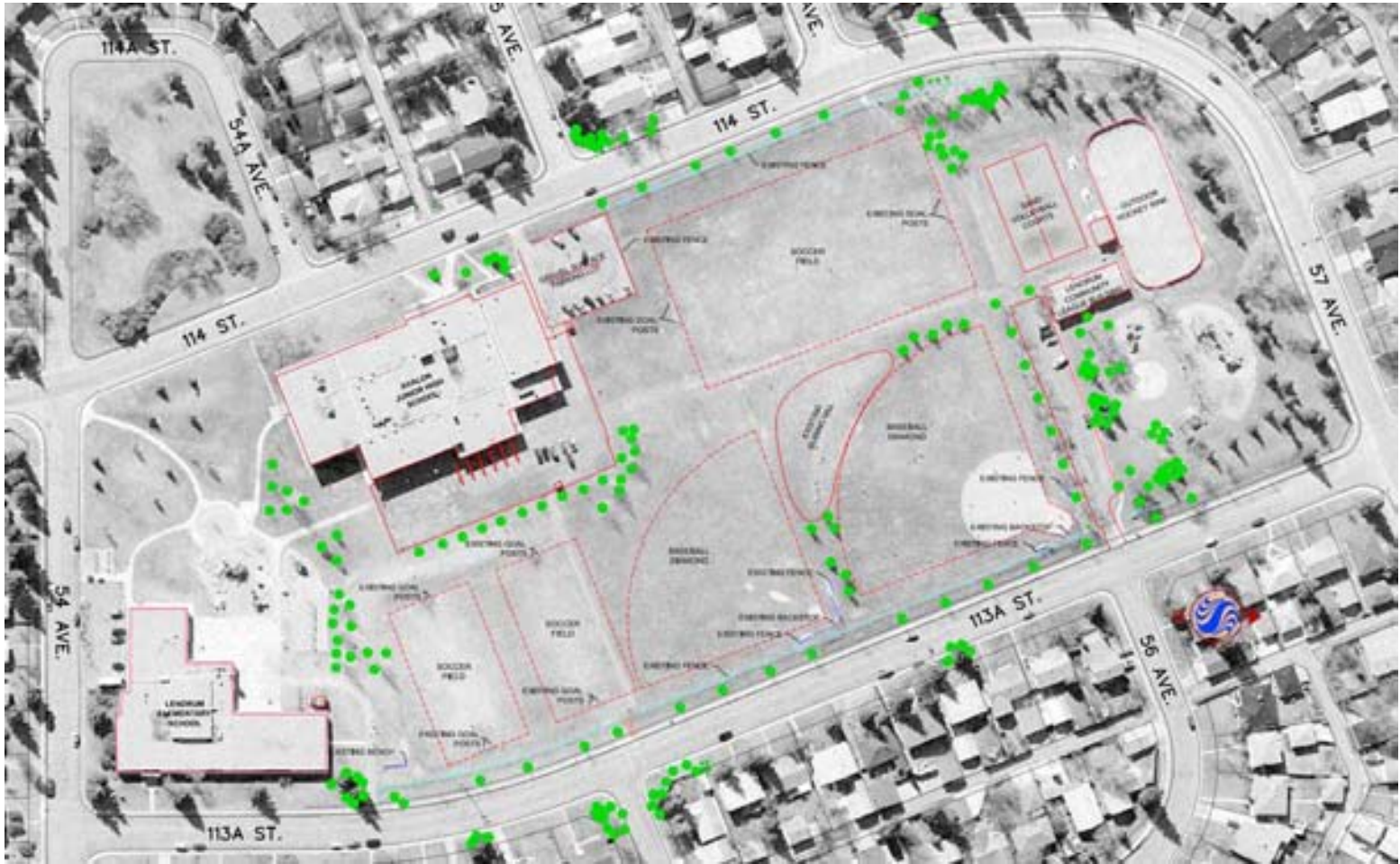
April 12, 2007



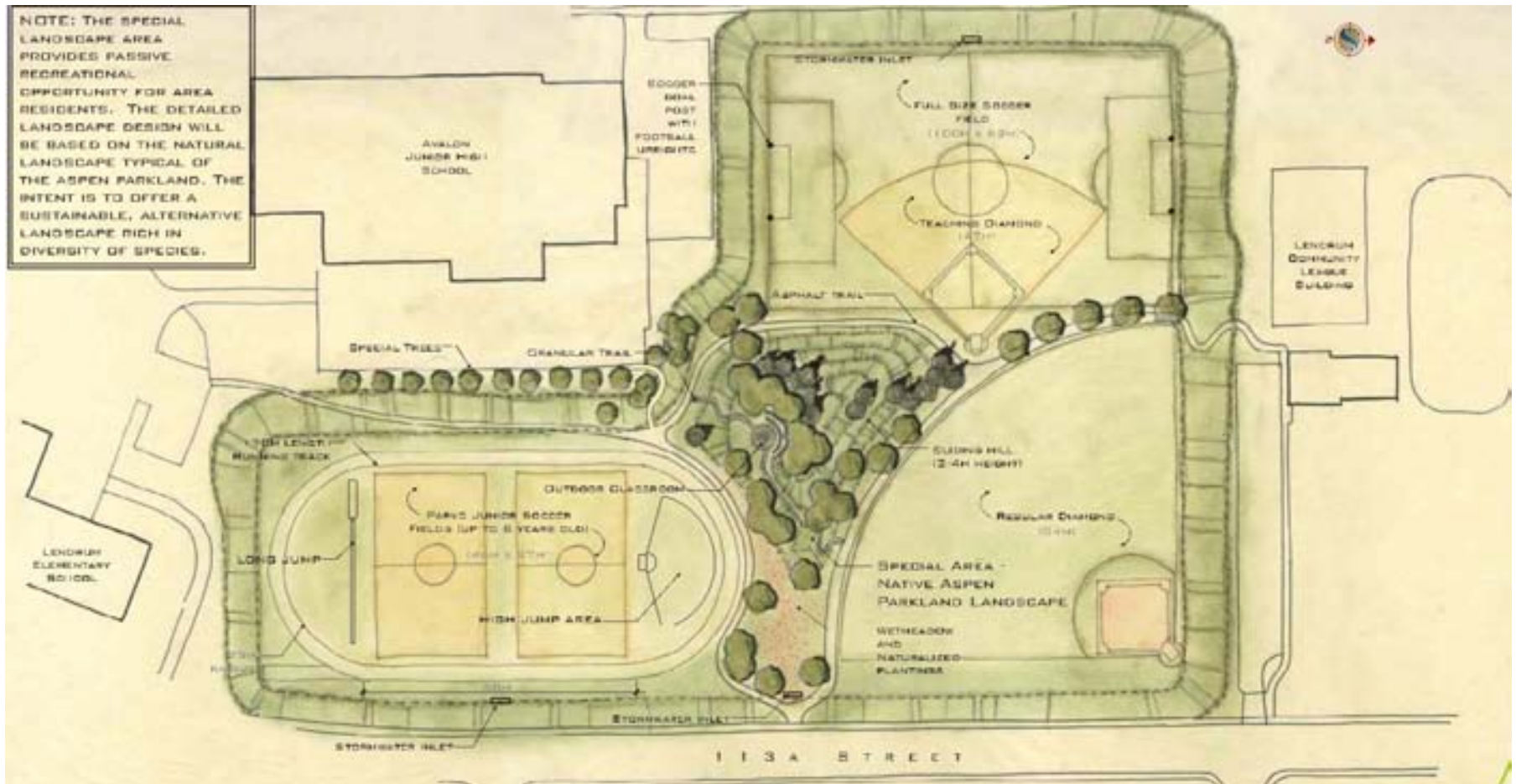
One Team. Infinite Solutions.



Existing Field



Field Layout Concept Design



Project Description

- Dual-Use Dry Pond / Playing Field
- Dry pond is proposed to be located at the Lendrum Elementary School & Avalon Junior High School playing fields
- Pond will store stormwater from storms larger than 1:5 year
- Design storage volume for the pond is approximately 21,500 m³ with 71,600 m³ of common excavation required

Frequency of Use

Lendrum Place Dry Pond Utilization			
Storm Event	Nominal Depth (mm)	Ponding Volume (m ³)	Ponding Duration (hr:mm)
1:2 year	-	-	-
1:5 year	31	906	0:45
1:10 year	349	9,056	2:55
1:100 year	959	26,230	5:55
July 11, 2004	1,011	27,444	5:40

Truck Routes



Tentative Schedule

- École Avalon School Parking Lot – July 2007 to August 2007
- Preconstruction Open House – November 2007
- Bulk Excavation – November 2007 to May 2008
- Underground Pipe Installation – May 2008 to July 2008
- Finish Grading – July 2008 to September 2008
- Sodding and Landscaping – September 2008 to October 2008
- Fencing – September 2008 to November 2008