

LENDRUM LIVING

December, 2013



Lendrum
Community League
11335 - 57 Ave,
Edmonton
T6H 0Z7

Sections:

Community Programs	2
Message Board	3
South Campus	4
Neighbourhood Watch	6
Nature News	7
Playground	8
New Years Party	10
Classifieds	11

Inside this issue:

- Crime Stats
- School Safety
- Dry Pond Info
- South Campus Survey
- Pennie Drive
- Volunteers Needed
- 50th Anniversary
- www.lendrumliving.com



Merry Christmas
&
Happy New Year

Youth & Adult Programs

Ladies' Coffee Time:

First Monday each month, 10-11:15 am at Sunterra Market. For more info, please call Dorothy (780-434-3732).



780-239-2399.

Lose Weight - TOPS:

(Take Off Pounds Sensibly) Meets Tuesdays from 9:30-10:30am at Cross of Christ Lutheran Church - 11460-60 Ave. For support in weight loss, related programs contact Betty-Anne 780-437-7942 or Merna 780-438-3788.



For Info contact Don or Rita at 780-434-5885



Lendrum Pottery Group:

Please call Joy Schaut 780-434-1997 for info



Blue Chair Tai Chi:

Mondays 9-10:30am Malmo Hall
Fridays 9-10:30am Lendrum Hall.
Sorry, we do not offer beginner classes. If you know the 108-move Moy-style set, please join us in practicing at an intermediate level. Call Kathy, 435-0738.

Lendrum Badminton:

Adult drop-in, Tuesdays 8pm, Avalon School. Please contact Lynn Wong (780-438-0517).



Crafters of Lendrum:

The Lendrum Craft Group welcomes all residents and friends who enjoy doing handicrafts. We meet once a month and share a potluck lunch at the Community Hall. Bring a project to work on and/or completed projects to share. We meet from 11:00 - 4:00 pm, usually on the 3rd Monday, with a few exceptions due to holidays.



For info on compatible Beginner classes (outside the neighbourhood) please call Shen Dao Tai Chi at 587-920-6685.



The 22nd St. John's Scouts:

Come check Scouting out! We are always looking for new members!
Beavers (age 5-7) Mon 6:30-7:30
Cubs (age 8-10) Mon 6:30-8
Scouts (age 11-13) Wed 7-8:30
Ventures (age 14-17) Wed 7-8:30
All meetings in the evening at St. John's Anglican Church located at 11111-57 Ave. Call Tom Schroepfer for details: 780-432-0910



For more information, call Peggy Folinsbee 780-436-9322.



Line Dancing:

every Thursday from 10:00 - 11:30 am at Lendrum Community Hall.

Lendrum Yoga Class?

Does a beginners yoga class on Saturday mornings in our community sound interesting to you? Would you be interested in attending? Do we have a certified yoga instructor in the community that would be interested in taking this on? Contact Jo at 780.463.7079.



Sparks, Brownies, Guides and Pathfinders:

For girls ages 5-18 Call 780-435-5068 or email rlay.guides@hotmail.com [mainbowval](http://mainbowval.com)
For more info. Join anytime, always accepting new girls in all levels!



Seniors Drop-In:

Every second Wednesday at the Lendrum Hall. Any questions Contact Carolyn at

Please contact Gary Goulden with any ideas for possible new programs 780-450-0927 or [*programs@lendrumliving.com*](mailto:programs@lendrumliving.com)

Moms' Morning Out Toddlers Play time

Are you a mom with a toddler in Lendrum? Are you interested in connecting with other moms/toddlers in Lendrum?

Meets at 10:30 Tuesday mornings.

Lendrum's Annual Winter Festival

Sunday, Feb 9th, 12-4:00 p.m.

Hay Rides, Skating, Hockey, Music, Snowshoes, Tug-O-war, Sledding & Tobogganing

Volunteers needed...Contact Xanthe at 780-433-3627



Community Bulletin Board

Dear Rae and Carol Allen;

I wanted to take a moment to thank you for your participation in making Lendrum a great place to live. I understand that you have been involved in the Community League in various capacities over the years and have supported initiatives financially. And now I see the addition of two lovely benches, a mark of your generosity and leadership.

It is interesting to note that, after the benches were installed, I received a phone call from another resident inquiring about the process involved in getting the benches. They were considering adding another to the park area.

So, on behalf of me and the Lendrum Community Executive, thank you for all that you have done, and continue to do, to make this a great community.

Gary Goulden
President
Lendrum Community League



City of Edmonton Park Bench Donation Program

Established to offer individuals and groups the opportunity to honour friends and loved ones, or to celebrate special events through the refurbishment of an existing park bench, or the installation of a new bench.

For details visit: http://www.edmonton.ca/for_residents/programs/benchmark-program.aspx



Goodness Gracious Look who's 50!

Yes, break out the pink flamingoes... Lendrum Community League is 50 in 2014.



Do you like to have fun? Would you like to be a part of planning the celebration?

Please contact Xanthe xloyer@telus.net or



Lendrum Swim Program - Lendrum Community League participates in a unique swim program with the City of Edmonton. As a community league member, you can register at any City of Edmonton facility to obtain a pass card that allows you free swimming (public and lane swims). The Community League is invoiced, at a discounted rate, for your entrance everytime you use your card. The privileges of membership! And a great opportunity to stay active and healthy



Ice Making/Rink maintenance

Anyone interested in helping at the Lendrum rink. Training provided. Contact Gary 780.982.873





Michener Park

At an August meeting of the Michener Park focus group, the University suddenly announced the likelihood of leasing two major chunks of the site to private developers. This resulted in the SCNC withdrawing from participation. The withdrawal was based on four reasons:

- a) The prospect of having to deal with multiple, unconnected planning processes, instead of a single lead process represented by the University's Sector Plan.
- b) Greater uncertainty about the type of developments, and connectivity of these developments.
- c) Far greater uncertainty concerning the level of densification i.e. the intensity of development required to offset land lease rates, and the cumulative impacts of these independent developments. Just as Westcorp is insisting upon a particular density on the Golflands to make their leasing "economically viable", private developers leasing parcels of the Michener Park site are likely to make comparable demands. (*I do not feel that this represents a "NIMBY" attitude since it has always been clear that the development of this site would result in a doubling of student numbers, but the potential existed of far greater numbers of people.*)
- d) A broader concern about the patchwork approach to developing South Campus that results from one-off removal of parcels of land from University planning processes so that they can be leased to private developers as a means to offset development costs.

On November 15th the University stated that it will now provide development guidelines for the entire Michener Park sector. Therefore, the whole area will have to align with the current Long Range Development Plan. The University retains its options to amend the LRDP and to determine how development will take place (e.g through a P3 etc.). However, focus group meetings are due to resume. For current information on this please see: www.southcampus.ca

The SCNC also hopes that a new atmosphere of consultation will be the outcome of this choppy episode in our relationship with the University, and we will continue to press for a Community Plan approach that takes "the big picture" and gives voice to all stakeholders, which would include having City representatives at the table.



On-going topics

- As part of the process of obtaining a Wetlands Disturbance Permit, the University will shortly be issuing a public notice regarding Sector 12 wetlands disruption compensation proposal. Alternatives to relocate the wetlands are in planning.
- LRDP Amendments are still waiting for ministerial approval.
- Additional security measures have been taken in the hope of reducing the need for fencing around the Cyclotron facility.
- Tree removal for the 63 Avenue Access is nearly complete; with construction slated to begin in the spring.
- An urban agriculture workshop on November 1st included how the U could be involved with food security, economic impacts of food procurement policies (e.g. a 25% local policy), and making links to schools' Science curriculum.

South Campus Update *Continued*

- Due to a delay in the planned move of the Vehicle Pool to a different part of Sector 12, a division of Campus Protective Services will share the existing Vehicle Pool site.
- Within the next two years the Metabolic building will be moved from Sector 12 to Sector 13.
- A white “seasonal dome” has been proposed for Foote Field for use between November and April. The Phys Ed faculty has been asked to fundraise for half of the \$2 million cost.
- Dogs on University Farm: One dog owner has become very unhappy with leash expectation for those using University Farm for walking their dogs. The University would like to maintain open access for the enjoyment of all, but seeks continued support and cooperation with the farm manager. Local communities support the university's position concerning on-leash policies; this is particularly vital between sowing and harvest.
- Ice arenas: Representatives of the University, City, and SCNC met in early November to discuss a proposal to go before Council in January regarding a possible partnership between the UA and the City over construction of twin ice arenas. The SCNC supports this proposal.

South Campus Survey Results

The SCNC exists in order to give voice to community concerns and common interests. Conducting this survey was a worthwhile exercise with responses elicited from all eight neighbourhoods that provide extremely useful ideas and strengthen our ability to represent the views of local residents.

49% of the respondents felt adequately informed about South Campus developments (through Open Houses, etc.); but only 31% felt adequately consulted on planning developments.

Any survey can expose a diverse range of responses that do not serve to give a mandate to any particular course of action. However, the following four themes received wide reinforcement.

- 1) Almost all respondents expressed disappointment over insufficient emphasis given to the LRDP's environmental principles. Many answers echoed the belief that liveable communities have to be based upon sustainable, environmental-friendly infrastructure. There was repeated insistence that a healthier lifestyle should be the key component of all future South Campus development.
- 2) While the LRDP vision received praise, the developments so far are criticized as piecemeal. Foote Field and the Saville Centre are seen as useful additions to the City's sports facilities.
- 3) Volume of traffic and the amount of space currently given to parking received the widest criticism. Sensitive areas include positioning of the access from 122nd Street, traffic volume through Lendrum, and complaints that the Go Centre was sited on South Campus because it offered more extensive parking capacity.
- 4) The South Campus LRT station receives a wide welcomed, but the lack of a Southgate Park and Ride is seen to have resulted in significant parking implications for our neighbourhoods.



More results will be included in the next newsletter. Please write to the following email address with any questions or comments: civics@lendrumliving.com

Neighbourhood Watch

Please call **Edmonton Police Service** at 423-4567 (complaints line) to report suspicious persons or vehicles, traffic offences and any other issue of a non-emergent nature. (Use #377 from a cell phone) Call 9-1-1 for any emergency situation eg crimes in progress, break & enter, robberies, assault, and injury collisions. Report non-violent crime online at www.edmontonpolice.ca.

A written report can be filed at the new S.W. Division Police Station at 135 Windermere Way, 8am - 8pm, 7 days a week. Ph 780-426-8300 or at the Old Stratcona Community Station at 7903-104st, Mon-Sat, 8am - 8pm Sun, 10-6pm. Ph 780-496-8565.

Please call one of Lendrum E.N.H # below to report crimes, concerns, incidents that need to be reported to our network of volunteers (Police do not call us). Residents on our network can be alerted to be more watchful and to increase security measures by informing their neighbours.

Lendrum Area **North - 780-435-3076**
 South - 780-436-0735
 780-434-1294- Alternate

HOLIDAY SAFETY TIPS

Be careful with holiday candles

- Keep candles away from decorations or other combustible materials. Don't leave children unattended in a room with lit candles. Keep candles, matches, and lighters out of the reach of children. Never display lighted candles in windows or near exits.



Deck the halls with safety in mind - When decorating with lights, make sure they are certified by the Canadian Standards Association (CSA). If decorating an outside tree, use only those lights labeled for outdoor use. Don't overload electrical outlets, and always unplug all lights before leaving home or going to bed.

Prevent choking - For children, small toys and special foods can be an incident waiting to happen. Ensure toys are appropriate for the age of the child, and won't create a danger for younger children in the household. Don't put out nuts or candies when young children are expected, and don't allow children to run around with food in their hands or mouth. Learn basic first aid, so you know how to help a choking victim.

Keep Christmas trees fresh - Choose a fresh Christmas tree and secure it in a sturdy stand. Place the tree away from heat sources and exits and check water levels daily. If you purchase an artificial tree, be sure it is fire-retardant.



LENDRUM PLACE

	Jan	Feb	Mar	Apr	May	Jun	Jul	Aug	Sep	Oct	Nov	Dec	Total
2013	2	0	3	2	11	1	8	5	0	1	1	0*	34
2012	3	0	5	2	4	0	2	3	3	0	4	0	26
2011	3	0	2	2	0	3	3	2	0	2	2	0	19
2010	0	3	1	1	3	1	6	4	2	3	2	4	30
2009	3	1	3	2	3	4	2	5	4	4	2	4	37

Crime Stats For Lendrum

<http://www.edmontonpolice.ca/CrimeFiles/NeighbourhoodCrimeMapping.aspx>

REPORT A CRIME ONLINE

www.edmontonpolice.ca

Prepare for holiday parties - Decorate only with flame-retardant or noncombustible materials. If guests will be smoking, provide them with large, deep ashtrays and check them frequently. After the party, check under sofa cushions and in trash cans for cigarette butts that may be smoldering.

Designate a driver - When attending a party, designate a non-drinking driver. If you are hosting a holiday gathering, be sure there are non-alcoholic beverages for guests who are driving and arrange for alternate transportation for guests who drink.

Inspect fireplaces and wood stoves - Have your chimney connections and flues inspected by a professional and cleaned if necessary. Use a sturdy screen when burning fires. Burn only wood—never burn paper or pine boughs. If purchasing a factory-built fireplace or wood stove, select one listed by a testing laboratory, and have it installed according to local codes. If you plan to hang stockings on your fireplace, do not use the fireplace for fires.

Buckle up - During the holiday season, more people are on streets and highways. Ensure that all passengers are wearing safety belts. Seat children in the back seat of the car and in approved safety seats if younger than eight years old (less than 60 pounds).



Lendrum Nature News

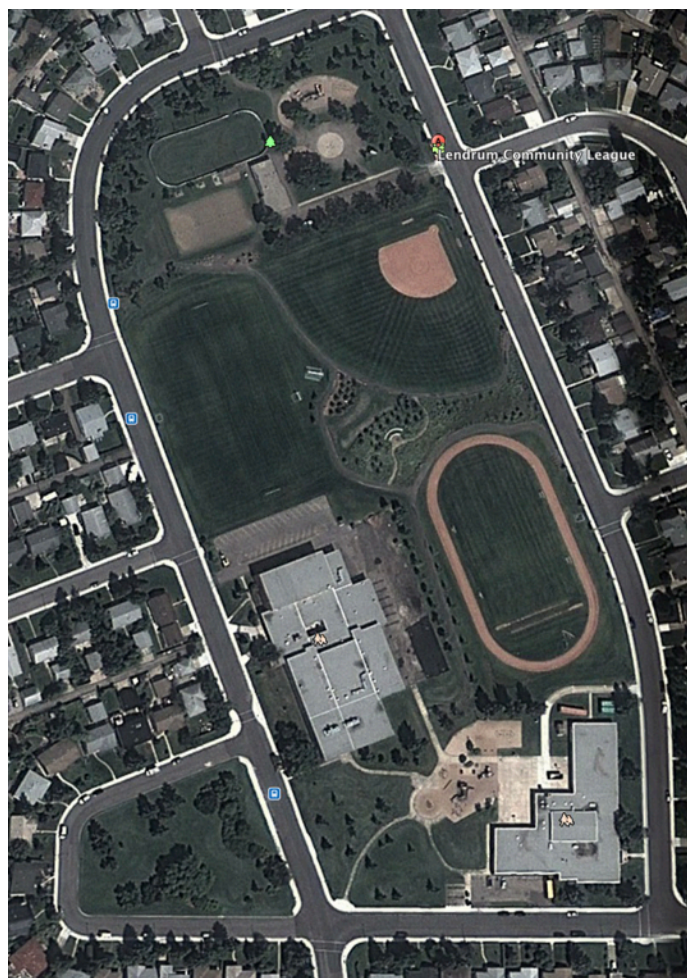
CELEBRATING VOLUNTEERS AT LENDRUM PARK over the past summer

After a late spring that delayed clean-up in the park, ten Lendrum residents and board members spent the morning of June 8 weeding, pruning and planting. Thanks to all who helped spring clean and beautify the park. Truly, many hands do lighten the load! Congratulations to Anola Carson who won the \$50 gift card from Salisbury Garden Centre. Thanks to the Falkensteins - Luke and Greg - for their assistance with regular maintenance through the summer.

If the park looked beautifully manicured when school resumed in September, it's due to a new initiative called Day of Service from the University of Alberta. Half of all the first-year students staying in residence volunteered to spend the afternoon of Friday, August 30 providing public service in Edmonton. Seven students assigned to Lendrum worked with energy and good humour and completed an impressive amount of work. Thanks to the organizers of this project; we hope it continues next year!

If the condition of our excellent sports fields or the beautiful park landscape is important to you, let your actions speak. Show your appreciation by volunteering at the next workbee.

Stewards of the park are Harvey Guhl, Peggy Follinsbee and Bonnie Herring-Cooper



(Satellite Image from Google Earth)

Front Yards in Bloom: Winterscapes

The program will feature a photo contest, for which you can nominate your own yard or a neighbour's yard. Program and contest details, as well as participant information packages for community leagues and schools will be available in January on our website, www.frontyardsinbloom.ca

This program and photo contest will be open to both individuals/homeowners, as well as teams, which can include community leagues, youth groups, and schools.

Although you must include natural elements, such as visible trees and shrubs, snow and ice in your winterscape, we encourage you to get creative by adding colour, lights, and different shapes or textures to the yard in front of your house, community hall or school.

Why not host a winterscape-making party within your household, neighbourhood or community as part of a Family Day or other fun event this February? Wonderful wintry fun awaits!



Lendrum Playground Re-development Fundraisers



HELP US:

- Attract new families into our community
- Retain our property values
- Match an AMAZING playground to our AMAZING green space
- Have somewhere SAFE and GREAT for our kids to play.

**We want to raise \$125,000 to build our playground!
And we are getting closer every month!**

There are many ways to get involved
and we are always looking for more hands to help out!
Together, we can do it.

Call Ron at 780.463.7079 with your idea for a fundraiser
or to help us get other fundraisers off the ground!



**It's not too late to donate to the playground...
we are in the final stretch of fundraising!**

If every family in Lendrum donated \$100, we would be
almost be there!

600 families x \$100 each = \$60,000 WOW!!!

To receive a Tax Receipt for your donation, make your
cheque payable to the "City of Edmonton" and put
"Lendrum CL Parkland Development Donation" in the
memo line. The City prepares receipts annually.

Cheques can be dropped off at 11131 – 55 ave. Contact
Ron at ronandjo@shaw.ca or 780.463.7079.
Corporate, individual and monthly donations are
welcome.



**Let's build a playground out of
Pennies!!!**

Pennies are out... but we still
think they are cool!
(We also take nickels, dimes,
quarters, loonies, and toonies!)

Contact Ron at
ronandjo@shaw.ca
780.463.7079 to donate yours!



Lendrum Playground Fundraiser

(continued)

Wow October was a long time ago!

A big thanks to Clarke, Annette, Tanner and Riley for hosting the Monster Mash at Halloween! There were some scary creatures in attendance and a ghoulishly good time was had by all... Hey, who is that monkeying around with the cash box?



Lendrum Playground Fundraiser (continued)

A New Year's Welcome Party!



When: Saturday, January 4, 2014
Time: 4 to 8 pm
Where: Lendrum Community Hall and Rinks
Cost: Free
Who: Everyone



What's it all about:

- **Skating** on the big and small rinks (BYO skates)
- **Sledding** (BYO sled)
- **Shinny hockey** (6:30-8 pm)
- **Winter fun and bannock making** (City of Edmonton)
- **Bonfires**
- **Fireworks** (at 8 pm)



A concession will be selling sausages-on-a-bun, snacks and treats as well as kid-friendly and adults-only hot drinks. There will be a raffle for some great items. All proceeds will go towards a new community playground.

Come enjoy the warmth of good friends, fun and food!

Funding Green Shack in 2014

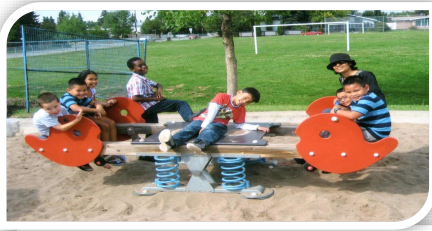
Green Shack is a City-wide program that staffs playgrounds with trained supervisors that engage children in fun, outdoor activities.

Some of you will recall that in the spring of 2013 the Province of Alberta surprised us when they announced the elimination of the STEP program from the budget. The Summer Temporary Employment Program funded summer jobs for young people and community leagues relied on it to pay for Green Shack supervisors. Lendrum Community League and our sister leagues scrambled to replace the funding. Thankfully the Federal Canada Summer Jobs program stepped in.



The City of Edmonton Council recently decided the Green Shack program is a vital part of recreation in our city and voted to provide sustaining funding. The details will be worked out but things are looking brighter for Lendrum's 2014 Program

Classifieds



AFTER SCHOOL KIDS' KLUB

Activities hosted by and at the McLaurin Baptist Church. Our goal is to connect with youth in fun and meaningful ways and to encourage them to build friendship and grow together. Our team comprised of our youth workers and fun-loving volunteers.



Activities include: Wii games, ping pong, bowling, sumo suits, dodge ball, movies, pizza parties, wall climbing, drama etc.

Membership is Free

Open to kids between Ages 6 & 15

Every Friday 4.15pm – 6.15pm

MCLAURIN BAPTIST CHURCH
 11107-51 Avenue
 Edmonton T6H 0L5
 t.: 780 434 1663
 e.: mclaurinbaptist@gmail.com
 www.mclaurinbaptistchurch.org

Join Malmo Preschool at WEM Waterpark!

On Sunday, January 12th, 2014 from 8:30 am – 11:30 am, Malmo Pre-Kindergarten will be hosting a fun-filled morning at West Edmonton Mall Waterpark!!!

TICKETS ARE JUST \$10 PER PERSON!!!

Please note: anyone under the age of 18 must be accompanied by an adult and children 2 years and younger are free!

All ticket purchases can be made via cash or cheque.

To purchase tickets or for more information, contact Michaelia at: president@malmopreschool.com

We hope to see you there!!

ATTENTION SENIORS (55+)!!! PETROLIA SENIORS' GROUP

Invites YOU to come to enjoy Lunch and a Program
The third Tuesdays of most months

11:45 a.m. (sharp) to 2:00 p.m.
at Greenfield Community Hall

3803 - 114 Street

January 21st – Lifelong Learning – Jeanna Baty from ELLA (\$14)

For more information or to CONFIRM your attendance by the Friday preceding the lunch meeting please

Call: Nick --780-435-1045 or Betty --780-434-0711

We look forward to your participation!



Belgravia Hub
FOOD & DRINK



Leslie McGlennon
Chef | Owner

7609, 115 Street
Edmonton, Alberta
780 756 3344
www.belhub.com

Contemporary Comfort Food
Beer & Wine



Community League Membership

Valid through August 31/14
 Complete this form and drop it with your cheque (Family \$40.00 or Senior \$25.00) (payable to Lendrum Community League)

Brent Jensen
 11216 54 Ave
 Edmonton, AB T6H 0V6

Or Call 780-995-8369

Your membership card and receipt will be mailed or delivered to your home.

Thank you for your support !!!

Name: _____

Address: _____

Postal Code: _____ Phone: _____

Email: _____

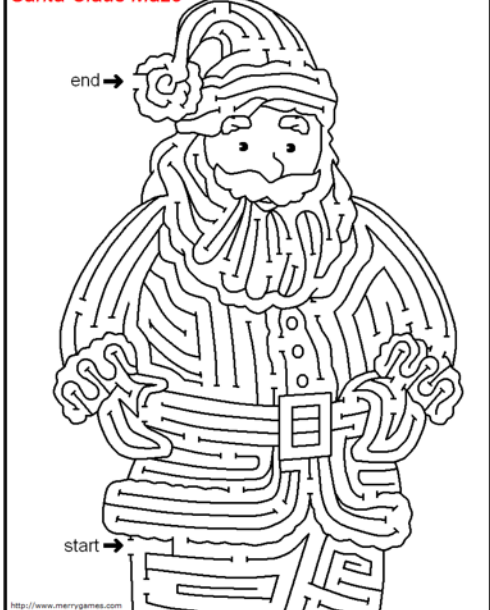
Willing to Volunteer: _____

Number of Adults in household: _____

Number of children in household: _____

Number of skate tags required: _____

Santa Claus Maze



Lendrum Community League 2013-14 Executive & Contacts

President:	Gary Goulden	(780) 450-0927
Vice-President:	Tony Olmsted	(780) 434-8325
Past President:	Bill Fish	(780) 437-6794
Treasurer:	Rick Young	(780) 271-0977
Secretary:	Natalie Cook	(780) 433-6429
Programs:	Gary Goulden	(780) 450-0927
Casino:	Catherine Rostron	(780) 434-3839
Civics:	Ray Benton-Evans	(780) 756-5402
	Joanne Ellison	(780) 437-5402
Memberships:	Brent Jenson	(780) 995-8369
Social:	Xanthe Loyer	(780) 433-3627
Soccer:	Susan Stewart	(780) 996-3406
	Jason Pfeifer	(587) 989-0907
Volleyball:	Lance Adamson	(780) 438-9168
Athletic Park:	Harvey Guhl	(780) 438-8226
Master Gardener:	Bonnie Herring-Cooper	(780) 431-9513
Master Naturalist:	Peggy Folinsbee	(780) 436-9322
Playground Devlp:	Ron Grelowski	(780) 463-7079
Building Rentals:	Neil Moir	(780) 263-0701
Ice Rink:	Gary Goulden	(780) 450-0927
	Gary Yaskowich	(780) 432-1029
	John Porter	(780) 438-1896
Member at Large:	Steven Dobson	(780) 455-7473
Lendrum Sign:	Luke Falkenstein	(780) 431-0752
Newsletter:	(Vacant)	
Website (New):	Marlene Konduc	
Information Systems:	Daryle Tilroe	(780) 439-4734
Newsletter Dist:	Catherine Stout	(780) 436-7179
Neighborhood Watch:	Shannon D.	(780) 428-8135
	Carol Allen	(780) 434-1294
CRC Rep (City of Edm)	Michael Goth	(780) 944-5404

Check www.lendrumliving.com for a full list of email addresses

Community League Volunteers Needed !!!

We have openings in :
 Communications (Newsletter)
 Programs
 Fundraising
 Call Gary if you can help...780-450-0927

Next Community League Meeting
 1st Monday of January
 7:00-9:00pm at the hall
 Everyone Welcome!!!

Advertising in the Lendrum Newsletter: No charge: classified ads from Lendrum residents, ads from non-profit organizations benefiting the Lendrum area. **Paid ads:** all other ads – business card \$15; 1/4 page \$25; 1/3 page \$35; 1/2 page \$50; full page \$95 (sizes are approximate). Most Mac or PC files usable, please allow enough time to verify your file is print-ready . Payment to be made to Lendrum Community League (PO Box 4570, T6E 5G4) Edm, Ab. **Note:** if you ever have a problem with the delivery of an issue of Lendrum Living, please contact Catherine, our Distribution Coordinator, at 436-7179. (Dist. Of 750 Newsletters each month)
Note: Deadline for the next issue is the first of that month. Distribution Begins mid month.
 Submissions can be sent to newsletter@lendrumliving.com..... Back issues can be found at our web site.

www.lendrumliving.com