

February, 2013

LENDRUM LIVING



Lendrum
Community League
11335 - 57 Ave,
Edmonton
T6H 0Z7

Winter Festival !

Don't miss our annual winter fun day for the whole community

Sunday
Feb 24th
1-4:00 p.m.

Hay Rides, Skating, Hockey, Music, Snowshoes,
Tug-O-war, Sledding & Tobogganing

Please bring your own mugs & a plate of "sweets or savories" to share.
Hot chocolate and coffee provided.

For more information, or to
volunteer your assistance
with this event

Contact Gary at
780-982-8738
Volunteers needed ...



Sections:

Community Programs	2
Message Board	3
Schools	4
Neighbourhood Watch	7
Soccer Registration	8
The Green Thumb	10
Playground	12
Classifieds	14

Inside this issue:

- Crime Stats
- Dry Pond Info
- South Campus Update
- Bike Paths
- Mobile Speed Bump
- Whose League Is Best!
- Who We Are
- www.lendrumliving.com

Youth & Adult Programs

Ladies' Coffee Time:

First Monday each month,
10-11:15 am at
Sunterra Market.
For more info,
please call Dorothy
(780-434-3732).



Lendrum Badminton:

Adult drop -in,
Tuesdays 8pm,
Avalon School.
Please contact
Lynn Wong
(780-438-0517).



The 22nd St. John's Scouts:

Come check Scouting out! We
are always looking for new
members!

Beavers (age 5-7)
Mon 6:30-7:30
Cubs

(age 8-10)
Mon 6:30-8

Scouts (age
11-13) Wed 7-8:30

Ventures (age 14-17) Wed 7- 8:30
All meetings in the evening at
St. John's Anglican Church
located at 11111-57 Ave. Call
Tom Schroepfer for details:
780-432-0910



Sparks, Brownies, Guides and Pathfinders:

For girls ages
5-18 Call
780-435-5068
or email



rlay.guides@hotmail.com [rainbowval](http://rainbowval.com)
For more info. Join anytime,
always accepting new girls in all
levels!

Seniors Drop-In:

Every second
Wednesday at the
Lendrum Hall.
Any questions
Contact Carolyn at
780-239-2399.



Lose Weight - TOPS:

(Take Off Pounds
Sensibly) Meets
Tuesdays from
9:30-10:30am at
Cross of Christ
Lutheran Church -
11460-60 Ave. For
support in weight loss, related
programs contact Betty-Anne
780-437-7942 or Merna
780-438-3788.



Crafters of Lendrum:

The Lendrum Craft Group
welcomes all residents and
friends who enjoy doing
handicrafts. We meet once a
month and share a potluck lunch
at the Community Hall. Bring a
project to work on and/or
completed projects
to share.

We meet from
11:00 - 4:00 pm,
usually on the 3rd
Monday, with a
few exceptions
due to holidays.

Monday February 11th;
Monday March 18th;
Monday April 15th;
Monday May 13th;
Monday June 17th.



For more information, call Peggy
Folinsbee 780-436-9322.

Lendrum Shiny Hockey:

Who: Lendrum
kids ages 8 - 16
(and parents).



Ability level doesn't matter
What: A fun hour of hockey with
your neighbourhood gang
Where: Confederation Arena
When: Saturdays 1:30 - 2:30
(running through - March 9th)
Cost: \$10 per player (child or
adult) for drop-in.
For more info or to register,
contact Gary 780.450.0927
Stew 780.432.9115

Rink hours:

Weekdays 3:30 - 9:30

Weekend/Holiday
10:30 - 9:30

Skate tags must be
worn.

No Alcohol is permitted within
the skate-room or on the ice.



Line Dancing:

every Thursday
from 10:00 - 11:30
am at Lendrum
Community Hall.
For Info contact
Don or Rita
at 780-434-5885



Lendrum Pottery Group:

Please call Joy Schaut
780-434-1997 for info



It's awesome.

Improved version:

Blue Chair Tai Chi:

Mondays 9-10:30am
Malmo Hall

Fridays 9-10:30am
Lendrum Hall.

Sorry, we do not offer
beginner classes. If
you know the 108-
move

Moy-style set,
please join us in practicing at an
intermediate level.
Call Kathy, 435-0738.



Please contact Gary
Goulden with any ideas
for possible new
programs

780-450-0927
or

programs@lendrumliving.com

Community Bulletin Board

Do you read the newspaper???



It starts with Scouts.

Use it to help send our Scouts to camp!

Lendrum's' very own 22nd St. Johns Scouts have an ongoing used newspaper fundraiser to help send us to camp. We have a "newspaper only" collection bin at the rear of St Johns Church at 11111 - 57th ave. Help us fill it with your used newspapers each month! Please call 780.463.7079 if you'd like to have us pick yours up!

Moms' Morning Out Toddlers Play time



Are you a mom with a toddler in Lendrum?
Are you interested in connecting with other moms/toddlers in Lendrum?
Contact Gary at programs@lendrumliving.com

Edmonton Mayor Stephen Mandel calls city bike lane planning a 'nightmare'



Mayor says bike lane planners are pushing cars off city roads

Details at...

<http://www.edmontonsun.com/2013/02/13/edmonton-mayor-stephen-mandel-calls-city-bike-lane-planning-a-nightmare>



Help Needed!!! Our community is hiring people interested in delivering the newsletter.
Call Catherine at 780-436-7179.

Whose League is Best? ... WIN a K-Days Party

Northlands will sponsor a K-Days Party in your own community if you can answer:
"Why is your Community League the best in the City?"
"Why does your League deserve to win a FREE party?"

Watch for the application for the K-Days party in coming news, fill it out and you can enter to win one of 4 Community League K-Days parties with food, entertainment, games, ride and prizes. Parties will take place in June, just before Edmonton hosts K-Days.

Thanks to Northlands for this opportunity.

For more information, contact Kris.Morra@efcl.org 780-437-2913



Area Schools

Ecole Avalon Lendrum School News

With the New Year now upon us, some would think things would slow down, but not here. Ecole Avalon Lendrum School is an exciting and energetic place to be ALL the time.

Let me just say, Lendrum School has a Parent Association that is second to none! Their commitment to all our programs is magnificent. Recently they sponsored the school-wide "Director's Cut" week long workshop. This workshop taught students how to write and tell a story using a variety of media such as: movie-making, paper-stop animation and Claymation. The grade 4 students went on an overnight field trip to the Bennett Center, that was also sponsored by PAC. Hands on activities emphasized the lessons taught in the science unit, Wheels and Levers. Role-playing activities gave the students a better understanding of life in early Alberta, which is part of the Social Studies curriculum. Up and coming PAC sponsored events are the HOJA concert on Feb 5, & the Ortona Gymnastics field trip on Feb 20 & Feb 22. HOJA is a Canadian acapella, high energy group. They will be performing an anti-bullying presentation using zany choreography and entertaining vocals. The Ortona Gymnastics field trip is in conjunction with the gymnastics unit in the Physical Education curriculum. Each class will spend half a day at Ortona, learning gymnastic skills from professional gymnasts.



Our choir has been hard at work learning new songs to perform for the residents of the South Terrace Continuing Care Center and Pleasantview Place which will be performed in March. The students, just like the rest of us, are dreaming of spring and are starting to plan the annual Spring Tea and Gallery Walk. The hardest part of these preparations falls on Ms Bonnie Anderson, as it is her job to decide which of every student's stunning pieces of art will be displayed! A very difficult job indeed!

Across the pond, common exams were written the week before Christmas break. Needless to say this kept the students academically focused. Students and staff were then able to take a much deserved break.

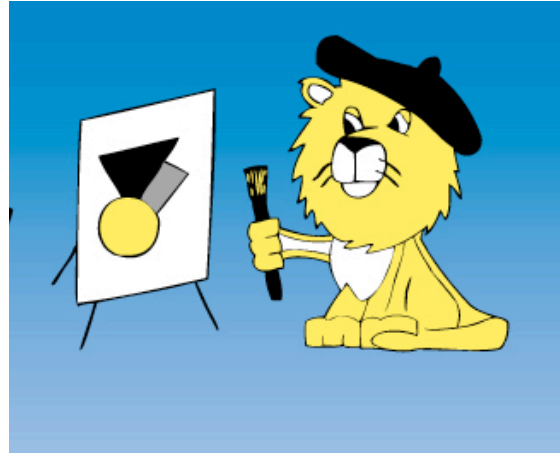
There are so many exciting events happening at Avalon this winter! Basketball is alive and well. This season we have four teams: Jr & Sr Boys & Girls teams. They are fantastic players; this will be a great season! Indoor Soccer has also started, with games just beginning. At this time- Avalon's tier 1 team is undefeated in regular season game play. Our Triathlon team is training for the upcoming Edmonton Triathlon festival in June. The wrestling team competed in the St. Cecilia Rookie Tournament. Out of 11 team members, 6 members placed in the top 5 of their weight category. Avalon brought home one gold, two silver and a bronze medal. Congratulations on a job well done!

The "Knights Before Christmas" Concert was a huge success. All the bands had wonderful performances. The grade 8 and 9 band students are looking forward to their upcoming band camp in February. Ms Sych has formed a grade 7/8 Honour Band that performed for ten, elementary school's grade three and grade four students at Harry Ainlay High School on January 30. This was a thrilling experience for our magnificent musicians.

Area Schools (continued)

The Outdoor Education students having been learning and participating in a variety of winter activities, such as; snowshoeing and cross country skiing. They have made their own "buddy burners" out of recycled soup cans, and will learn how to outdoor cook with them.

The Drama department has also been extremely busy preparing for two plays that will be performed in the spring. Our French Immersion students will be performing in "Le Petit Chaperon Vert" on March 14th. There will be a matinee performance on that day for our French Immersion elementary feeder schools, Greenfield and Richard Secord. The evening performance will start at 7:00 pm here at Avalon Junior High. Tickets are \$2 and are available at the door.



The English students will be performing "13", a hilarious, high energy musical for all ages, about discovering that cool is where you find it, and sometimes where you least expect it. The performances will be held in the theatre at Harry Ainlay High School on Thursday April 25 & Friday April 26 at 7:00 pm. Advance tickets will be \$10, available in the main office at Avalon starting March 1. Tickets will also be available at the door for \$15.

Avalon hosted our first "Knight for a Day" on January 29. We invited grade 6 students from Lendrum, Malmo, Lansdowne, and the grade 6 French Immersion students from Greenfield and Richard Secord, to spend an afternoon being an Avalon Knight. They were able to tour all of the option classes and try their hand at a variety of engaging activities such as: card-making, airplane building, drama & outdoor education games and making smoothies in the Home Economics kitchen. We are looking forward to having these students attend Avalon in the 2013/2014 school year.

Open House dates for both Lendrum and Avalon are fast approaching. Lendrum is an Arts enriched school. Academics are enriched with art, music and drama, and visits by authors and artists are used to engage and inspire our students. The Lendrum school focus is differentiated instruction; our teachers are experts in adapting instruction to individual student needs. We believe that a strong Kindergarten program is important to establish a life-long love of learning. If you have a child that will be 5 years old before March 1, 2014 please come and register for Kindergarten at Lendrum. The Parent Association sponsors our Kindergarten program by purchasing all Kindergarten supplies and funding for all the Kindergarten field trips. The Lendrum Open House will be March 14, 6:00 pm

Avalon Junior High offers a well-rounded education in academics, athletics, fine arts & citizenship. We focus student character development on respect & responsibility. Avalon Open House will be held on Thurs. March 7, 6:00-8:00 pm. Join us! Take a tour of our school; meet our Avalon students and staff. Students will be demonstrating their talents in Drama, Home Economics, Industrial Arts, Music, Design & Media and a very special Robotics demonstration! Avalon School continues to be open boundary school!

The learning, the fun, and the action can never stop at Ecole Avalon Lendrum School.

Who We Are?

A look into Lendrum (part 2)

NEIGHBOURHOOD PROFILE

Lendrum Place

Period of Construction

	Occupied Units	% of Total	City%
Before 1946	10	1	4
1946 to 1960	100	13	17
1961 to 1970	615	79	16
1971 to 1980	55	7	24
1981 to 1985	-	0	10
1986 to 1990	-	0	6
1991 to 1995	-	0	6
1996 to 2000	-	0	6
2001 to 2006	-	0	12
Occupied Private Dwellings	780	100	100

Source: 2006 Census of Canada, Statistics Canada

Occupied Private Dwellings by Tenure

Tenure	Number	% of Total	City%
Owner Occupied	560	71	63
Renter Occupied	225	29	37
Total	785	100	100

Source: 2006 Census of Canada, Statistics Canada

Residential Units by Unit Type

Type of Unit	Number	% of Total	City%
Single-detached house	615	78	50
Semi-detached, triplex, fourplex	10	1	7
Row house	-	-	10
Apartment over 5 storeys	-	-	9
Apartment under 5 storeys	160	20	23
Movable dwelling	-	-	1
Total	785	100	100

Source: 2006 Census of Canada, Statistics Canada

Note: totals may not sum due to random rounding

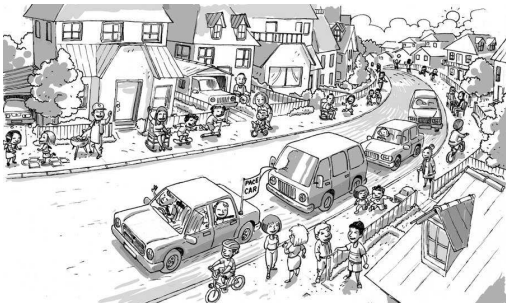
Neighbourhood Watch

Please call a Neighbourhood Watch number if you have any information that needs to be reported to our network. We then can alert people to be more watchful & to increase security measures. (The police do not call us).

ENW Info for Lendrum – 434-1294
 Lendrum Areas: N.E. 435-3076,
 S.W. 436-0735
 Report a Drug House 426-8229

If there is an emergency situation please call 9-1-1.
 If you need a patrol car to come out to the community or your home please call the police at 423-4567. (e.g.. Suspicious person or vehicle)
 Any reports of suspicious or criminal activity should be reported to neighborhood watch zone leaders, so that it can be noted in the newsletter under **Alert**.
 Reports must be filled out at the Fairway Police Station at 119th street and Fairway Drive, the phone number is 496-8550

Operation Mobile Speed Bump...Update



**Remember !!! 30km
 It's working...keep it up Lendrum!!!**

The streets of Lendrum continue to be used as a short cut for residents from surrounding neighbourhoods. Unfortunately many of these individuals feel it is preferred to race through Lendrum then face delays on 111st. These delays are caused by the poor traffic control around the LRT Line, In addition we have thousands of cars each month going to the facilities on South Campus. The only way to curb this traffic is to make it less convenient for them. Driving 20km or 30km is the only thing each and every one of us can do.
 For our kids health ...Please HELP!!!



LENDRUM PLACE

	Jan	Feb	Mar	Apr	May	Jun	Jul	Aug	Sep	Oct	Nov	Dec	Total
2013	2												2
2012	3	0	5	2	4	0	2	3	3	0	4	0	26
2011	3	0	2	2	0	3	3	2	0	2	2	0	19
2010	0	3	1	1	3	1	6	4	2	3	2	4	30
2009	3	1	3	2	3	4	2	5	4	4	2	4	37

Crime Stats For Lendrum

<http://www.edmontonpolice.ca/CrimeFiles/NeighbourhoodCrimeMapping.aspx>

PARENT ALERT!

On Friday, February 8 , while walking home, a Grade 7 Avalon student was approached by a strange adult man near 113A st & 58 ave. This man tried to engage the student in a conversation and then grabbed his shoulders. The student was able to walk away unharmed, but was left very shaken by the incident. The police were notified.

This man is described as approx. 6' tall, and quite large (over-weight) wearing big, square glasses.

If you have any questions or concerns feel free to call Avalon School 780-434-8402, or you can contact the Edmonton Police Service.

Graffiti on west and north walls of Lendrum School

Occurred between Friday, February 8 late afternoon and Sunday, February 10 noon. Please call EPS at 780-423-4567 if you have any information.

Litter...Please be on the lookout for contractors or people from outside our area dumping trash in alleys and on Lendrum residents property. If you see someone, report their license plate number to Neighbourhood Watch.

Join the Fun! Play Outdoor SOCCER!!!

Remember soccer registration is online!!!
The process is in 2 parts:

1: Online registration from mid Jan to Feb 28th 2013. Visit www.swemsa.com to pre-register your child.
Please print 2 completed online registration forms.

- ☺ Players may only register with the community in which they reside.
- ☹ Registrations received after Feb 28th will be considered late and cannot be guaranteed a place on a team.



2. Attend in person payment session at the Lendrum Community Hall on Sun Feb 24th 1-3pm or Thurs Feb 28th 6-8pm. Remember to bring:

- Your 2 completed online registration forms
- Your community league membership (or purchase one at the payment session). Please don't buy one online!
- Your volunteering spirit! Volunteers are critical to our soccer program. HOW CAN YOU GET INVOLVED? EACH FAMILY please select one position:

Coach a team / assist coach / team manager / registration assistance / orange schedulers / phone callers / equipment set-up / year-end BBQ assistance / assist with field maintenance / referee / equipment coordinator / referee coordinator / soccer coordinator.

Note: If you are not able to volunteer for community soccer in some way, please provide a \$50 current date cheque with your registration.

- Your cheques made out to Lendrum Community League:
 - Registration Fee (\$ as below with current date)
 - Uniform Deposit (\$50 dated Oct 1st, 2013)
 - Non-volunteer fee (\$50 with current date), if applicable.

Outdoor Season: runs from mid-April (assuming the snow is gone!) until end of June

LEVEL	DATE OF BIRTH	FEE (\$)	DAY	TIME (est.)
Mighty Mites	2009	\$50.00	Not decided	6:15 p.m.
Under 6	2007-2008	\$80.00	Mon/Wed	6:15 p.m.
Under 8	2005-2006	\$90.00	Tues/Thurs	6:15 p.m.
Under 10	2003-2004	\$90.00	Mon/Wed	6:15 p.m.
Under 12	2001-2002	\$110.00	Tues/Thurs	6:15/7:30 p.m.
Under 14	1999-2000	\$110.00	Mon/Wed	7:30 p.m.
Under 16*	1997-1998	\$135.00	Sun/Thurs	7:30/5:00 p.m.
Under 18*	1995-1996	\$135.00	Sun/Tues	7:30 p.m.

*must have player card - see www.lendrumliving.com for details

Lendrum Community League is committed to supporting children being able to participate in community soccer.
Please contact us if the cost keeps your child from playing.

SOCCKER COORDINATORS: soccer@lendrumliving.com
Xanthe Loyer 780-433-3627 and Jo Grelowski 780-463-7079

Ever thought about playing STING Competitive Soccer???

Soccer players from ages U10 to U18 who are interested in a more competitive level of play should consider trying out for a STING team.

Open tryouts will be held in March.



Check the STING website for details and to register for tryouts: www.swstingsoccer.com



Lendrum will need a new soccer coordinator, effective July 1, 2013...

If you want your children to have a chance to play in Lendrum, Lendrum needs to have a soccer coordinator. We have found that having 2 people share the role works well!

Jo and Xanthe welcome interested parties to shadow them through this year's registration process.

Contact soccer@lendrumliving.com for more details.

Consider COACHING Lendrum Community Soccer... our kids will love you for it!



FREE coaching courses available for Lendrum coaches and assistant coaches!

Check out www.edmontonsoccer.com for coaching course information.



Lendrum Soccer Gear Roundup and Giveaway!

Wondering what to do with your too small soccer gear?
Need the next size of cleats for this upcoming season?
We can help!

Bring your used shin pads, cleats, soccer socks, and Lendrum Timbits jerseys to the Community Hall on one of the soccer registration dates (1-3 pm on Sun Feb 24th and 6-8pm on Thurs Feb 28th).

Anyone needing gear may take what they need. Any gear remaining at the end of registration will be held within our soccer program for another chance!

Referees and Assistant Refs (Linesmen) Needed!

12 year olds: you can ref this year! Earn \$20 a game to ref U8.

Teens: Earn \$25 a game for U10 and U12, \$30 a game for U14

Adults: Earn \$45 a game for U16 and U18.



Referee Courses are mandatory (and FREE for Lendrum residents)

Contact Catherine at stoutclan@telus.net and

check out www.edmontonsoccer.com for early ref courses.

The Green Thumb

Management of Black Knot - Frequently Asked Questions

What is Black Knot?

Black Knot, caused by the fungus *Apiosporina morbosa*, is a very common disease of plants in the genus *Prunus* (See Table 1). A survey in Alberta revealed a significant and widespread distribution of Black Knot found in commercial, municipal, private and natural plantings. This disease reduces the aesthetic value of affected specimens, as infections spread rapidly; high levels may result in the eventual death of the plant.

How can you recognize Black Knot?

The most distinguishing symptom of Black Knot is the characteristic black, tar-like swellings that develop on branches of the infected plant.

Initially, a small, olive-green gall or swelling will develop at a succulent growing point or fruit spur (as a result of spores landing and infection taking place). This swelling will grow until it is mature after 2-3 years. The mature galls are hard, black, 10 to 15 cm (4 to 6 inches) and may be somewhat ruptured. Mature galls will produce and release a vast amount of spores during the bloom period, resulting in a rapid increase in infections. The fungus continues to grow internally and externally, with the branch eventually becoming girdled and dying.

What can be done to control Black Knot?

Removal of sources of inoculum (prevents population build up).

Prune out all knot-bearing branches during late fall, winter or very early spring when plants are dormant and knots are easy to see.

Remove infected branches to at least 15-20 cm (6-8 inches) below knot.

NOTE: It is preferable to prune an infected branch further back to an appropriate location, such as a healthy collar, rather than leave a stub.

As a precaution, cutting blades should be cleaned and disinfected after pruning, if possible, especially if cuts have been made through obviously infected material.

For knots on scaffold branches or trunks that can't be removed, cut away diseased tissue down to good wood and at least 1 cm (1/2 inch) beyond the edge of the knot. Failure to remove branches beyond the internal growth will result in re-growth of the fungus.

DISEASED WOOD MUST BE DESTROYED IMMEDIATELY (burned, buried or removed from site). Diseased knots can produce and release spores for up to 4 months after removal. Proper composting can help to accelerate the breakdown of infected materials.

Ensure plants are healthy and free from stress (not a guarantee from disease).

Regular monitoring.

Ensure adequate canopy ventilation through proper pruning.

Chemical control (preventative not curative).

Few choices available; Not usually recommended unless for valuable plantings, such as collections, orchards, arboreta or for severe infestations. Other options may include use of more resistant selections, ensuring adequate buffer zones between plantings and wild stock, or potential employing of biological control products (limited). Consider hiring a trained professional for pruning activities ([Find a Certified Arborist](#)).

[http://www1.agric.gov.ab.ca/\\$department/deptdocs.nsf/all/faq7622](http://www1.agric.gov.ab.ca/$department/deptdocs.nsf/all/faq7622)

<http://www.arborcare.com/resources/diseases/black-knot-disease/>



CALLING ALL LENDRUM RESIDENTS WITH AN INTEREST IN THE NATURAL AREA



Do you or your children play or wander through the natural area in the dry pond in Lendrum? Do you walk, exercise your dog or run along the paths between the sports fields? Do you enjoy picking the saskatoons and raspberries growing on the hillsides? We invite you to share your vision for this space. Our goal is to capture the many current uses and possible future enhancements of the natural area. We will present this information to the people at City Hall who allocate resources for the park. The more detailed our plan, the clearer it will be what materials, labour and expertise Lendrum needs from the City.

Please drop by for coffee and conversation at Lendrum Hall between 11 a.m. and noon Tuesday Feb. 26 or call/ text Peggy (780-445-0116) or Bonnie (780-270-9620) with your comments.

Peggy Folinsbee, Master Naturalist & Bonnie Herring-Cooper, Lendrum Community Gardener

South Campus Update



The University of Alberta is seeking community approval for amendments to its Long Range Development Plan (LRDP) for South Campus. It is holding an Open House on Thursday 14th March from 5:30 to 8:30 pm at McKernan School; a presentation and Q&A session is planned for 7pm. This doesn't sound as though it will be the most exciting event on your calendar; however it is important, and I encourage you to attend given the significant implications for our neighbourhood.

The plans are comprised of three sectors. Sector 12 is the northern half of the land of University Farm (north of 60th Avenue); Sector 13 is land between 51st Avenue and 60th Avenue; Sector 14 is the "West 240" (west of 122nd Street, between Grandview and Landsdowne). The University has guaranteed that Sector 13 will continue to have an agricultural focus—at least for the next thirty years there will be only limited change here, such as construction of the relocated Metabolic Unit. Therefore, the main concerns for Lendrum exist around Sector 12 proposals.

The LRDP was approved in 2002 and gave broad indication of "land use designations" for the three sectors. Local residents gradually become aware that "University Farm" might change as the U of A needed to expand more than its main campus would allow. However, typical expectations of a new campus involved a fuzzy picture of a number of academic buildings along with some student residences.

The Saville Centre and Foote Field were broadly seen as impressive facilities for tennis, curling, football and athletics. The Go Centre had a more mixed reception as the initially proposed site in Mill Woods was rejected due to insufficient parking capacity. There are now plans for twin ice arenas. Such developments are warmly welcomed by some as holding the prospect of enhancing both university and community with the addition of quality sporting centres. They are also criticized by others as holding the prospect of a South Edmonton Common equivalent for sporting venues, involving sustained traffic volumes and requiring too many parking stalls on what was assumed to be a "green" campus. (The parking lots that serve the Go Centre—as well as being used for LRT commuters—are supposed to be phased out once the multistory lots are constructed in the future.)

The University does enjoy almost Vatican-like status in that its developments are not subject to the Municipal Government Act, but rather by provincial statute (Post Secondary Learning Act, Land Use Regulations). However, it is legally obliged to conduct thorough public consultation if it is to be successful in getting ministerial approval for LRDP amendments. (It is sometimes criticized as providing information without any significant consultative element.) It will be interesting to see whether any South Campus plans will be impacted by impending cuts expected from next month's provincial budget. The person who would have "signed off" on LRDP amendments was Stephen Khan who has just been bumped from his position as Minister for Advanced Education (portfolio has been transferred to deputy premier Thomas Lukaszuk). There is likely to be additional pressure for revenue generation (or at least "cost offset"); however, the University cannot stray too far from an academic focus since blatant commercialization contradicts the spirit of the Post Secondary Learning Act.

Lendrum is one of the eight members of the South Campus Neighbourhood Coalition (SCNC), which meets regularly with university representatives. Over the last few months discussion has focussed on an access road on the west side of the farm, on 122nd Street at 63 Avenue. The focus now is shifting to address concerns around LRDP Amendments. One of these changes is for land originally designated as "academic" to become designated as "shared use". The latter allows for facilities that would be used by both students and members of the public, without—as yet—any clear notion of the balance between those two groups. This is perhaps an attempt to attract arena funding from the City of Edmonton which, for example, is talking about the closure of a couple of City-run ice rinks.

Please try to attend the **Open House on March 14.**

Please send comments and questions to: rb6@ualberta.ca

Please find out background information by browsing the following website:

<http://www.communityrelations.ualberta.ca/en/CommunityConnections/LongRangeDevelopmentPlan/SouthCampus.aspx>

You can also see comments from earlier community feedback at:

http://www.communityrelations.ualberta.ca/CommunityConnections/~media/communityrelations/Documents/SCCG/SCCGmaterials/SC-CompositeLandUse_ResponseToCommFeedback_Nov2011.pdf

Lendrum Playground Re-development Fundraisers

Help us:

- Attract new families into our community
- Retain our property values
- Match an AMAZING playground to our AMAZING green space
- Have somewhere SAFE and GREAT for our kids to play.

We need \$100,000 within this next year so we can get our playground built!

There are many ways to get involved and we are always looking for more hands to help out!

Together, we can do it.

Call Ron at 780.463.7079 with your idea for a fundraiser or to help us get other fundraisers off the ground!!!

Thank you for all your donations for Playground Redevelopment!!!

Congratulations and a big thanks to Lendrum residents for your generosity!

Last year, we received about \$16,000 in donations from Lendrum residents!

Thanks so very much!

It's not to late to donate to the playground !

If every family in Lendrum donated \$100, we would be well on our way!

600 families x \$100 each = \$60,000 WOW!!!

To receive a Tax Receipt, make your cheque payable to the "City of Edmonton" and put "Lendrum CL Parkland Development Donation" in the memo line. The City prepares receipts annually. Cheques can be dropped off at 11131 - 55 ave.

Contact Ron at ronandjo@shaw.ca or 780.463.7079 for more information. Thanks!!! Corporate, individual and monthly donations are welcome.

Let's build a playground out of Pennies!!!

Pennies are on the way out... but we still think they are cool! Save your pennies for the playground!! (We also take nickels, dimes, quarters, loonies, and twoonies!)



When you are ready to get rid of them, contact Ron or Jo at ronandjo@shaw.ca 780.463.7079


Did you know money you already spend on groceries can help us raise money for our Playground... just by purchasing Sobeys gift cards from us!?!?

Our playground earns up to 10% of the value of all the Sobeys' cards you buy from us. That means that for every \$100 you spend at Sobeys, the playground could earn \$10! It adds up! We have earned over \$3,000 on this fundraiser so far!

Name: _____ Phone Number: _____

Email: _____

For your everyday groceries...

	Denomination	Quantity	Dollar Amount
	\$25.00		
	\$50.00		
	\$100.00		
Total Dollar Amount			

Consider ordering monthly with postdated cheques!

Fill out this form and drop it off with your cheque made out to **Lendrum Community League** at 11352 - 57th ave. Please do not leave cash in the mailbox!

Ask your friends and family to purchase gift cards though us!

Email us (giftcards@lendrumliving.com) or call Heather (780.439.1266) or Jo (780.463.7079) with any questions!

All proceeds to Lendrum Playground Re-development.

Classifieds and Services

ASSIST Community Services is a new neighbour in south west Edmonton, offering a wide range of free services for immigrants. The ASSIST South centre is located at 11016-51 Avenue, in Pleasantview Shopping Centre. **ASSIST is having an open house from 1:30 to 4:30 PM on March 28**, with a special program of entertainment at 2 PM. **Everyone is invited to attend.** The centre is now open and providing services. Immigrants or those wanting to help immigrants to access services are invited to call [780-429-3119](tel:780-429-3119) for information or appointments. More information is available at www.assistcsc.org.

Music and exercise program for your child that won't break the family budget. Impact Performing Arts Association is accepting members. Keep your teenager busy by sending them to hangout with the marching band. Now practicing minutes from Lendrum. For more information check out Impact's website at <http://www.impactarts.ca/> or call 780-246-7228."

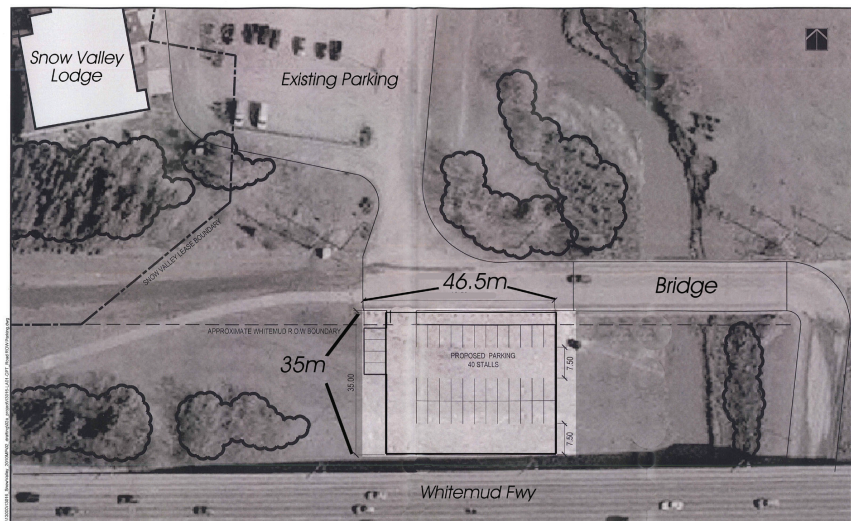
We need the residents of Lendrum Community League to get out and vote!

Last year, we at Avenue Magazine conducted our first-ever Best Neighbourhoods survey, in conjunction with Banister Research and Consulting Ltd. The response was tremendous. And after months of number crunching, the survey provided the data we needed for our first-ever [Best Neighbourhoods Issue](#), which came out in August, 2012. Strathcona won, Garneau came in second. But we want to do it again for 2013. We got a lot of feedback from those who didn't think their neighbourhoods were well represented. Now, they have the chance to make their voices heard. Please pass this onto members of your community league. Make their votes count for our magazine's 2013 Best Neighbourhoods Survey! Here is the link!
<http://www.avenueedmonton.com/blogs/edmontons-best-neighbourhoods-2013-make-your-vote-count>



In order to better serve the citizens of Edmonton and their guests, Snow Valley Ski Club is announcing the development of a seasonal parking lot just below the Rainbow Valley Bridge just southeast of the Lodge. This gravel parking lot will be 35 x 46.5 metres and have space for an additional 40 vehicles during the busy winter season. The development will take place during the summer of 2013 and be ready for the 2013-14 season.

For further information please contact:
Paul Robinson,
Snow Valley Ski Club
(780) 434-3991



Classifieds and Services

ATTENTION SENIORS (55+)!!!

PETROLIA SENIORS' GROUP

Invites YOU to come to enjoy Lunch and a Program (\$14)

**The third Tuesdays of the month 11:45 a.m. (sharp) to 2:00 p.m. at Greenfield Community Hall
3803 - 114 Street**

February 19th – Speaker from Homeward Trust

**March 19th – Having Trouble Sleeping? What to do?–
Karen Berger**

**April 16th – My Cree g-g-grandmother Kisiskaciwan--
Vern Wishart**

May 21st - Myths and Realities of Aging

**In addition enjoy an additional “outing”
during the month**

For more information or to CONFIRM your attendance

Call: Nick --780-435-1045 or Betty --780-434-0711

Please confirm attendance by Friday...

We look forward to your participation!



GREEN CIRCLE PRESCHOOL

Open House & Registration

FEB 21 from 5-7 PM & MARCH 19 from 5-7 PM

at Parkallen School
6703 - 112 Street



A place where friendships begin & children blossom

- + Learn Through Play
- + University-Accredited Teacher
- + Parent cooperative
- + Full subsidy available
- + Centrally located near U of A
- + Small class size
- + Community feel

www.greencirclepreschool.com | Phone: 780.435.3129

Spring promotion at Green Circle Preschool for new families: if you register before the end of February you can get 4 months of preschool for the price of 3 months(for the 2013 spring term).



LENDRUM EYECARE



New Patients Welcome!

**Dr. Kelsey Ford
Optometrist**

5822-111 Street Edmonton
780-437-1409 Next to Jack's Grill
Lendrumeyecare.com

Classifieds and Help Wanted

Dependable Inc.

Formally known as the Two Sister House Sitting



Are you hiding from the cold weather?
Are you hiding from the kids?

Whether you are leaving for a few weeks or a few hours I am available to house, pet or child sit.

I am just shy of being fifteen and have completed my babysitting training. I have experience looking after children as young as one year old.

If you are leaving for a vacation, I can shovel walks, pick up mail, or feed animals.

Contact me at 780-439-1266 or
hpmd@telus.net
Dena Lamothe

Les Causeries The Introducing French Playschool

WE ARE LOCATED IN PLEASANT VIEW COMMUNITY HALL.
10860 57 AVE., EDMONTON, AB
CALL: 780 435-887
WWW.FRENCHPLAYSCHOOL.CA

CLASSES:
3 YEAR OLD (AM) T, TH
4 YEAR OLD (AM) M, W, F
3 & 4 YEAR OLD (PM) M, W, F



Les Causeries



Now Accepting Registrations

CALLING INSPIRING YOUTH WRITERS

"My Edmonton" Writing Contest

The "My Edmonton" writing competition is a call for junior and senior high school aged youth in Edmonton to tell us about what **makes them connected to Edmonton**. Whether your feelings about the city are defined by one unique experience or by your ongoing relationships with the people and places in Edmonton, we want you to hear the diverse definitions of being an Edmontonian as expressed by different youth perspectives.

Entry deadline:
February 28, 2012
The top three entries in both the Junior and Senior High Categories will be awarded cash prizes.



Burns and Scalds

Every month Alberta Health Services EMS responds to emergencies where a young child has sustained severe burns or scalds. These incidents often occur inside the child's own home. Common causes include a child accidentally tipping hot liquids onto themselves, touching a hot surface, or making contact with an electrical outlet. Fortunately, incidents such as these can be avoided by taking simple preventative measures.

Degrees of burn

- **1°:** Affects only the top layers of the skin; appears red like a sun burn; discomfort is generally tolerable.
- **2°:** Deeper and much more painful than 1° burns; broken skin or blisters commonly develop.
- **3°:** Severe: the deepest layers of skin and tissue are injured; may appear charred or leathery.

First Aid for burns

- Skin may continue to burn if not aggressively cooled. Immediately douse burns with large amounts of cold water.
- Cover the burn with a sterile dressing, or any clean, non-fluffy material to protect from infection.
- Over the counter medications may be used for pain. Adhere to directions given on the label.
- Seek further medical attention from your doctor as required.

Prevention of burns

- Check the temperature of your hot water tank. Many homes keep hot water temperatures as high as 60°C / 140°F. This temperature will scald a child in just seconds.
- Use placemats instead of tablecloths. Tablecloths can be yanked downward causing hot drinks or food to spill on a child.
- Turn pot handles to the back of the stove and ensure cords from kettles, slow cookers, and other electrical appliances cannot be reached.
- Avoid picking up a child while holding any hot liquids.
- Ensure electrical outlets are made secure by installing commercially available safety devices that prohibit access.

If you require immediate medical attention for a burn, call 9-1-1.

www.albertahealthservices.ca

Community League Membership

Valid through August 31/13
 Complete this form and drop it with your cheque (\$25.00 or \$10.00—Seniors) (payable to Lendrum Community League)

Jessica Stewart
 11135-57th Ave
 T6H 0Z7

Or Call 780-691-9071

Your membership card and receipt will be mailed or delivered to your home.

Thank you for your support !!!

Name: _____

Address: _____

Postal Code: _____ Phone: _____

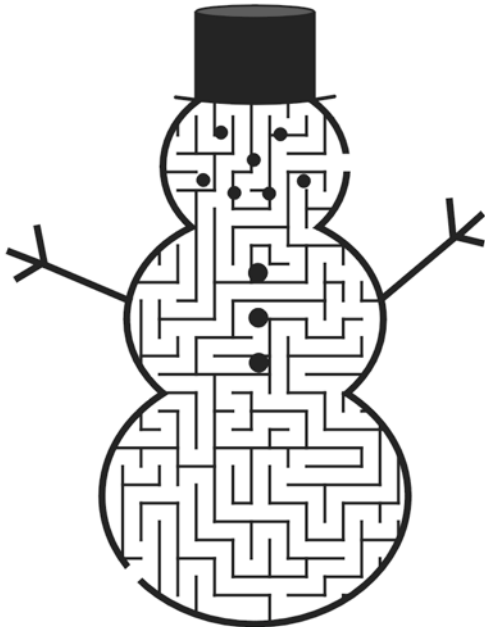
Email: _____

Willing to Volunteer: _____

Number of Adults in household: _____

Number of children in household: _____

Number of skate tags required: _____



Lendrum Community League 2013 Executive & Contacts

President:	Gary Goulden	(780) 450-0927
Vice-President:	Vacant	
Past President:	Bill Fish	(780) 437-6794
Treasurer:	Dale Somerville	(780) 434-1032
Secretary:	Danielle Gajewski	(780) 989-0782
Programs:	Gary Goulden	(780) 450-0927
Casino:	Catherine Rostron	(780) 434-3839
Civics:	Ray Benton-Evans	(780) 756-5402
	Joanne Ellison	(780) 437-5402
	Gail Faurshou	(780) 436-4361
	(Vacant)	
Fundraising Memberships:	Jessica Stewart	(780) 691-9071
Social:	Gary Goulden	
Soccer:	Xanthe Loyer	(780) 433-3627
	Jo Grelowski	(780) 463-7079
Volleyball:	Lance Adamson	(780) 438-9168
Athletic Park:	Harvey Guhl	(780) 438-8226
Community Gardner	Bonnie Herring-Cooper	(780) 431-9513
Playground Devlop:	Ron Grelowski	(780) 463-7079
Building Rentals:	Neil Moir	(780) 263-0701
Ice Rink:	Gary Goulden	(780) 450-0927
	Gary Yaskowich	(780) 432-1029
	John Porter	(780) 438-1896
Member at Large	Steven Dobson	(780) 455-7473
Lendrum Sign	Luke Falkenstein	(780) 431-0752
Newsletter/Web:	Harvey Guhl	(780) 438-8226
Information Systems	Daryle Tilroe	(780) 439-4734
Newsletter Dist:	Catherine Stout	(780) 436-7179
Neighborhood Watch:	Shannon D.	(780) 428-8135
	Carol Allen	(780) 434-1294
CRC Rep (City of Edm)	Michael Goth	(780)

Check www.lendrumliving.com for a full list of email addresses

Help Needed!!!...Our community is hiring people interested in delivering the newsletter
 Call Catherine at 780-436-7179

Next Community League Meeting
 1st Monday of the month...
 7:00-9:00pm at the hall

Advertising in the Lendrum Newsletter: No charge: classified ads from Lendrum residents, ads from non-profit organizations benefiting the Lendrum area. **Paid ads:** all other ads – business card \$10; 1/4 page \$20; 1/3 page \$30; 1/2 page \$40; full page \$80 (sizes are approximate). Most Mac or PC files usable, please allow enough time to verify your file is print-ready . Payment to be made to Lendrum Community League (PO Box 4570, T6E 5G4) Edm, Ab. **Note:** if you ever have a problem with the delivery of an issue of Lendrum Living, please contact Catherine, our Distribution Coordinator, at 436-7179. (Dist. Of 750 Newsletters each month)
Note: Deadline for the next issue is the first of that month. Distribution Begins mid month.
 Submissions can be sent to newsletter@lendrumliving.com..... Back issues can be found at our web site.

www.lendrumliving.com