

November, 2012

LENDRUM LIVING



Lendrum
Community League
11335 - 57 Ave,
Edmonton
T6H 0Z7

Sections:

Community Programs	2
Message Board	3
Events Scrapbook	4
Neighbourhood Watch	7
Meals on Wheels	10
Meals on Wheels	10
Playground	12
Classifieds	14

Inside this issue:

- Pottery Sale
- Shinney Hockey
- Turkey Trot Pics
- Monster Bash Pics
- Mobile Speed Bump
- Snow Angels
- Volunteers needed
- www.lendrumliving.com

A Party for our Playground, the 3rd annual Silent Auction



When? Saturday, November 24th, 2012
Doors open at 6:45pm, bidding from 7-9pm

Where? St. John the Evangelist Anglican Church, 11111 - 57 Ave

Who? You! And your family. And bring along some friends.
The more the merrier!

Why? Some of the items up for auction: Earls Chef's Table!, Sawridge Inn one night stay, dinner and brunch!, Snow Valley passes! Southgate gift card!, Handmade quilt!, Nike golf bag!, Nike carry-on suitcase!, Artistic Bakery Gift card!, Christmas Baking!, Bird Feeder Package!, Fountain Tire gift certificate!, UofA Gear!, Oilers photo!, books!

Tickets? \$10/per adult, kids are free. Includes a drink and snacks.
Purchase tickets in advance, limited tickets available at the door.

To donate items for the auction contact Liz at tomandliz@shaw.ca
To volunteer or to buy tickets contact Ron or Jo at ronandjo@shaw.ca or
780.463.7079.

All proceeds to Lendrum Playground Redevelopment.

Youth & Adult Programs

Ladies' Coffee Time:

First Monday each month,
10-11:15 am at
Sunterra Market.

For more info,
please call Dorothy
(780-434-3732)



Lendrum

Badminton:

Adult drop -in,
Tuesdays 8pm,
Avalon School.

Please contact
Lynn Wong
(780-438-0517)



The 22nd St. John's Scouts:

Come check Scouting out! We
are always
looking for new
members!

Beavers (age 5-7)

Mon 6:30-7:30

Cubs

(age 8-10) Mon

6:30-8

Scouts (age 11-13) Wed 7-8:30

Ventures (age 14-17) Wed 7- 8:30

All meetings in the evening at
St. John's Anglican Church

located at 11111-57 Ave. Call
Tom Schroeffer for details:

780-432-0910



Sparks, Brownies, Guides and Path- finders:

For girls ages 5-18

Call 780-435-5068

or email

rley.guides@hotmail.comainbowval

for more info Join anytime -

always accepting new girls in all

levels!



Seniors Drop-In:

Every second
Wednesday at the
Lendrum Hall,

Any questions
Contact Carolyn at
780-239-2399



Lose Weight - TOPS:

(Take Off Pounds
Sensibly) Meets
Tuesdays from
9:30-10:30am. at
Cross of Christ Lutheran Church
- 11460-60 Ave. For support in
weight loss, related programs
contact Betty-Anne
780-437-7942 or Merna
780-438-3788



Crafters of Lendrum:

The Lendrum Craft Group
welcomes all residents and
friends who enjoy doing
handicrafts.

We meet once a month and
share a potluck lunch at the
Community Hall. Bring a project
to work on and/or completed
projects to share.

Monday's from

11:00 to 4:00

Sept 17, Oct

15, Nov 19,

Dec 17



For more information, call Peggy
Folinsbee 780-436-9322

Line Dancing:

every Thursday
from 10:00 -
11:30 am at
Lendrum
Community Hall.

Experienced
instruction supplied by Jim &
Sheila New...
For Info contact Don or Rita at
780-434-5885



Lendrum Pottery Group:

Please call
Joy Schaut
780-434-1997 for info.



Blue Chair Tai Chi:

Mondays 9-10:30am

Malmo Hall

Fridays 9-10:30am

Lendrum Hall.

Sorry, we do not offer
beginner classes. If you know
the 108 move set, please join us
in practicing at an intermediate
level.

Call Kathy, 435-0738.



Lendrum Community - Event Reminders Email List

The community league would
like to use your email addresses
to share reminders about
upcoming community events,
issues, or fundraisers, and
advertise for any volunteers
required. This community list
will be safeguarded by a
community league executive
member and will not be shared.
Any emails sent out to the
community using this list will be
approved by a representative of
the community league executive
prior to sending and will be sent
by bcc (blind copy) to all
recipients. Please email
info@lendrumliving.com if you
would like to be included on this
community email distribution list
and receive community notices
this way.



Please contact

Gary Goulden

450-0927

or

Programs@lendrumliving.com

with any
ideas for possible
new programs

Community Bulletin Board

Thank You!

Thank you to all who have purchased their community memberships for 2012-2013.

We still have many more memberships to sell throughout the year.

Big thanks to the generous donations by:
Helga L. Webb
Rae & Carol Allen

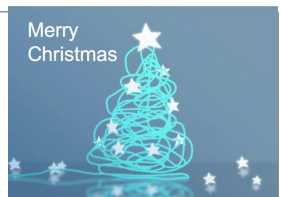
Jessica Stewart, LCL Memberships

"Thanks so much to the wonderful community of Lendrum for all your support in our Thanksgiving bottle drive and our popcorn sales. It was a great success thanks to you! We will be around again in the spring on our next bottle drive so save those bottles for us!



The Canadian Scout Jamboree is at Sylvan Lake in July 2013 and Lendrum's very own 22nd St. Johns Scouts are fundraising like crazy to get there! We have an ongoing used newspaper fundraiser. We have a collection bin at the rear of St Johns Church at 11111 - 57th ave. Help us fill it with your used newspapers! Please call 780.463.7079 if you'd like to have us pick yours up!"

Christmas Card Fundraiser on Sunday Dec 2, 2012. Participants pay \$35 and make 15 beautiful Christmas cards, envelopes included!. \$20 from each registrant will go to the community fundraiser. No creativity required everything is pre cut for you! Creativity is just an added bonus! There will be snacks and door prizes available to be won! We will be doing this at the Lendrum Community building. I will have two classes one in the morning from 9am until noon and the second class will be from 1pm until 4pm. I will have all supplies pre cut and ready to go all each individual will need to bring is their own adhesive (glue). I will be selling some that day if you forget to bring your own! I need people to pre register with me at stampinwithmaria@gmail.com so we have enough supplies ready for everyone and space will be limited. Hope to see everyone there!



Lendrum Shiny Hockey

Who: Lendrum kids ages 8 – 16 (and parents). Ability level doesn't matter

What: A fun hour of hockey with your neighbourhood gang

Where: Confederation Arena

When: Saturdays 1:30 – 2:30 (starting September 22nd – March 9th)

Cost: \$10 per player (child or adult) for drop-in.

Sign up for the year - pay \$200 for 24 sessions (approx. \$8 per) and adults can skate for free.

For more info or to register, contact Gary Goulden 780.450.0927 Programs@lendrumliving.com

Stew Carson 780.432.9115 stewcarson@shaw.ca



Events Scrap book

Fun Run...It was a great day to "trot" around the community and enjoy visiting with neighbors, new and old. We had participants in the run/walk and then a few others around in support.



Annual Lendrum Turkey Trot



The last days of summer...



Finally SNOW...



Lendrum Nordic Ski Club... thanks Peggy and John for leading the way

Lendrum Pottery Group Christmas Sale



Saturday December 1, 2012
10:00 AM - 2:00 PM
11335 - 57 Ave
(Entrance off 113A St.)



Pottery for all tastes at reasonable prices.
Dishwasher, oven and freezer safe
Complementary Coffee



The 2012/2013 school year is officially underway. Our enrollment of 151, at the Lendrum campus, is much higher than we had projected in the spring. That is GREAT news for the Lendrum community. We have so many kindergarten students again this year that we had to create two classes; AM Kindergarten has 16 students, PM Kindergarten has 13 students. We are extremely pleased that Mrs. Stout is teaching both.

This year promises to be full of many interesting, artistic & educational workshops, field trips and events, the first of which was the annual Terry Fox Run. This year's run was the most successful campaign ever! Together staff and students raised \$4451.30, exceeding our goal of \$4,000. On Thursday, September 27th, the entire student body and staff walked and ran through the community declaring our commitment to the memory of Terry Fox and our dedication to the cause of raising money for cancer research. Thanks to all students, families and staff who participated.

Artist in residence, Donna Boomer, will be conducting a week long mask making workshop in November. The students will be using a variety of recyclables to create masks as part of our Arts Enrichment program. This workshop will be a wonderful collaboration between the two campuses as Avalon students will be at Lendrum to support our Division I students. Thank you to our wonderful PAC for co-sponsoring this program along with the Alberta Foundation for the Arts.

"Director's Cut" is again coming to Lendrum. This will be a school wide workshop that teaches students how to write a story and then tell that story using a variety of media, such as; movie making, paper stop animation, claymation, and creating an interactive storybook using digital pictures.

Hoja will be here in February for an Anti-bullying Concert, as well the entire school will go to Ortona Gymnastics to accentuate the gymnastics portion of the Physical Education curriculum.

It seems like we are going to be very busy again this year.

It is just as exciting and busy on the Junior High side of the park. Avalon's enrollment is down this year, with a total of 366 students. This just makes us a much tighter learning community.

The first of our international trips was over the Thanksgiving weekend. Some of our drama students were able to join with 50 students from Scona High School for a whirlwind four days of acting, dancing and singing workshops, 3 Broadway shows, sightseeing and museum visits. Our grade 7 French Immersion students will have the opportunity to visit Quebec in the spring which will enhance their Social Studies Curriculum. Also in the spring a trip to France is being organized. This trip is open to all grades. Last but not least is the Grade 8 Social Studies/Humanitarian trip to Costa Rica.

The Avalon Athletics department have finished the soccer season and started into the Volleyball season. Our Avalon Cross Country Running team competed in the Goldbar City Finals, dedicating the race in memory of former Avalon student Isaak Kornelsen, who tragically died in an accident on Aug 27.

The grade 8 & 9 bands have been busy preparing for the W.P.Wagner Festival in November. December is right around the corner, which is an extremely busy time for all of our bands as they will be performing in a multitude of places all over the community.

The Outdoor Education students having been learning and reviewing map and compass skills, with field trips to the River valley and Hawrelak Park. The grade 9 students also had the opportunity to learn Geocaching.

Both campuses, Lendrum and Avalon have been busy learning and applying the "7 Habits of Effective Kids/8 Habits of Effective Teens". This is the third year of this school wide character education program. Habit #1 – Be Proactive, "Take Responsibility for Your Actions", "Think before You Act", "Think about Solutions and Options". The habits the students are learning and living only add to their overall outstanding character. To quote Mrs. Butlin, "We are a school of future leaders."

Demolition and construction have begun in the former Avalon Courtyard. For those of you that were not aware, our own Guey Family has adopted this space and we have renamed it "Harry's Garden". The Guey Family has worked extremely hard with private sponsors and the Edmonton Public School Board facilities department to redesign the entire courtyard so it will become a beautiful, useable garden to be enjoyed by everyone. Their dedication to our school and to this community is truly inspiring.

As you can see both campuses have hit the ground running for this school year, with more exciting educational endeavors to come.



Alberta
Foundation
for the Arts

What to expect on Edmonton streets this winter

The City of Edmonton is committed to keeping streets in good winter driving condition throughout the snow season, and crews work around the clock to achieve that goal.

There are a number of changes that have been implemented this winter:

- A seasonal parking ban has been created that will impact residential bus routes. The City of Edmonton will call a ban with a minimum of **eight hours notice**. At that time, vehicles must be moved from those routes with the 'Seasonal Parking Ban' signs; those not moved after the eight hours will be tagged and towed.
- Once priority routes are plowed, crews will move into residential areas to blade to a 5 cm snow pack. Even if there is another snow event that requires additional work on priority routes, crews will NOT be removed from residential areas until the blading cycle has been finished.
- If the snow pack on residential streets cannot be maintained at 5 cm, crews will plow down to bare pavement where required.
- Windrows will be kept to a minimum on residential streets and will not be removed; every effort will be made to keep them at a maximum height of 30 cm in front of driveways. If crews have to plow down to bare pavement, windrows will be higher and there may be some delay before skid steers are able to clear driveways.
- Windrows will be removed on a regular basis from school drop off zones, seniors centres and Edmonton Transit bus stops.




Stay in the Know About Snow!

You can find out when the City calls a bus route parking ban in several ways. Media announcements will be made, information will be on the City of Edmonton website, and postings will be made via the City of Edmonton's **Facebook** page and **Twitter** account. You can also sign up for **free, confidential email notification** by visiting www.edmonton.ca/winterroads and clicking on 'Subscribe to Roadway Alerts.'

Information on **residential street clearing** will be available through the City of Edmonton's website via our new **interactive map**. By visiting www.edmonton.ca/winterroads and clicking on 'Residential Snow Plowing Schedule,' you can select the Snow Clearing Map tool and enter your address. The system will then give you an exact date that work will start on in your area.


For those without computer access, the same information about parking bans and residential street maintenance can be accessed by calling 3-1-1. You can also advise 3-1-1 about specific issues of concern related to winter road maintenance and that information will be forwarded to the appropriate department.



Alberta Health Services

Emergency Medical Services

Cold weather safety



Alberta Health Services EMS responds to many cold weather related emergencies every winter. Simple actions such as dressing appropriately and anticipating sudden weather changes can help keep you both warm and safe this season.

<p style="text-align: center;">Frostnip</p> <ul style="list-style-type: none"> Frostnip occurs when skin is extremely cold, but not frozen. It commonly affects the ears, nose, cheeks, fingers and toes. The skin appears red but also turns to white when pressed. It may feel numb to the touch. When treated promptly, frost-nipped skin will heal without complication. Gently re-warming the affected area in a warm environment is advised. 	<p style="text-align: center;">Frostbite</p> <ul style="list-style-type: none"> Frostbite is when skin becomes so cold, the skin and underlying tissue freeze completely. It may look white and waxy and will feel hard to the touch. Treatment begins with removal from the cold environment and placing the affected area in warm, <i>not hot</i>, water (about 41°C) until re-warmed. Seek further medical attention as required.
<p style="text-align: center;">Hypothermia</p> <ul style="list-style-type: none"> Hypothermia is abnormally low body temperature (less than 34°C as compared to normal body temperature of about 37°C). People suffering hypothermia may act inappropriately with uncharacteristic stumbling, mumbling, and fumbling, as their body temperature continues to lower. Early recognition and prompt medical attention is crucial. Left untreated, hypothermia may progress to coma and death. Call 9-1-1. Don't forget to protect yourself from the factors that originally lead to the patient's situation. Gentle re-warming should start as quickly as possible including: removal of wet or constrictive clothing, covering with blankets or sleeping bags, and protecting the patient from further heat loss (wind, moisture and contact with cold surfaces). 	

www.albertahealthservices.ca

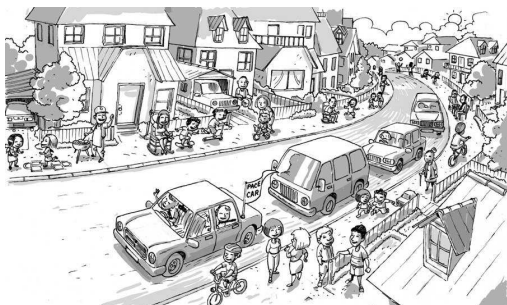
Neighbourhood Watch

Please call a Neighbourhood Watch number if you have any information that needs to be reported to our network. We then can alert people to be more watchful & to increase security measures (The police do not call us).

ENW Info for Lendrum – 434-1294
 Lendrum Areas: N.E. 435-3076,
 S.E. 434-4648,
 S.W. 436-0735
 Report a Drug House 426-8229

If there is an emergency situation please call 9-1-1.
 If you need a patrol car to come out to the community or your home please call the police at 423-4567.
 (eg. Suspicious person or vehicle)
 Any reports of suspicious or criminal activity should be reported to neighborhood watch zone leaders, so that it can be noted in the newsletter under **Alert**.
 Reports must be filled out at the Fairway Police Station at 119th street and Fairway Drive, the phone number is 496-8550

Operation Mobile Speed Bump...Update



**Remember !!! 30km
 It's working...keep it up Lendrum!!!**

Driver speed

Children are more likely to be struck by a car in areas with higher speed limits. In fact, there is a direct correlation between an increase in vehicle speeds and the increase of the risk of injury. A pedestrian struck by a car traveling at 50 km/hr is eight times more likely to be killed than a pedestrian struck at 30 km/hr. and even small reductions in speed can be significant. For each 1.6 km/hr reduction in average speed, collision frequency is reduced by five per cent. Reducing vehicle speed has been proven to be effective in preventing crashes and reducing the severity of injuries. At a speed of 30km/hr, vehicles and pedestrians are able to co-exist with relative safety, which means that drivers have sufficient time to stop for pedestrians, and pedestrians can make better crossing decisions.



LENDRUM PLACE

	Jan	Feb	Mar	Apr	May	Jun	Jul	Aug	Sep	Oct	Nov	Dec	Total
2012	3	0	5	2	4	0	2	3	3	0			22
2011	3	0	2	2	0	3	3	2	0	2	2	0	19
2010	0	3	1	1	3	1	6	4	2	3	2	4	30
2009	3	1	3	2	3	4	2	5	4	4	2	4	37

Crime Stats For Lendrum

<http://www.edmontonpolice.ca/CrimeFiles/NeighbourhoodCrimeMapping.aspx>

Changing attitudes and behaviours

Pedestrian safety is each driver's responsibility. Children's physical and mental capacities are still developing well into their teens and they are often unable to make safe judgments about pedestrian safety. Drivers must be prepared for children to act like children.

Unfortunately, speeding is common in Canada. According to the Traffic Injury Research Foundation, about 2.7 million Canadians admit to habitually driving well over the speed limit; 2 million admit to frequently accelerating to get through a traffic light and about 670,000 say they take risks while driving, just for the fun of it.³ And it is significant that drivers are unable to accurately assess their own speed while they are driving and, as a consequence, make few adjustments in the presence of children.⁴

Mechanisms that alert speeding drivers can be very useful and according to Transport Canada 72 per cent of Canadian drivers endorse roadside warning signs to tell them when they are speeding.⁵ In addition, a combination of speed cameras and fines can enforce speed limits in residential areas and school zones. One study illustrated that when these strategies are in place, the number of vehicles traveling more than 10 km/hr over the speed limit actually dropped by 70 per cent.⁶ Speed limit reductions in countries such as South Africa, Belgium, Finland, France, Germany, New Zealand, United Kingdom and the United States, have demonstrated that when a speed limit was reduced, there was a decline in road crashes ranging from eight to 40 per cent.⁷

Lendrum Community League Events Update

The Monster Bash scared many of us into the Halloween spirit this year!

No end of scary creatures snuck into our neighbourhood that night. From sneaky ninjas to fierce knights, bone jangling skeletons to viscous vampires. Edward Scissorhands offered up haircuts to only the very bravest.



Even Michael Jackson thrilled us all - though we are not entirely sure how he found the party...



Perhaps it was the blood curdling screams that came from the haunted house (it may have been me!)! Skulls rattled, creepy and strangely dextrous spiders lurched out, and many a scary critter was hanging around moaning. Oooooooooooooo.

Or maybe the skull disco ball signaled him. No matter, it kept the dance crowd in check though... zapping away their immediate need for blood. Those many ghouls and boys danced the night away and gobbled creepy cupcakes in apparently unquenchable volumes under the careful (?) watch of the horseman (and his head)

Some spooks even braved a dark and frosty game of Capture the Ghost outside - it gave them all goosebumps! But beware, one ghost was never found. We think it might have disappeared into the menacing shadows of the playground...



Join us next year for the next installment of this long awaited bone chiller!

Huge thanks to Sobeyes & Safeway for their donations as well as Annette, Clark, Tanner and Riley Heatherington for putting on this fantastically frightening event on behalf of the playground! We don't know how they do it but we are sure glad that they do!!!





LENDRUM LIVING November, 2012

Christmas Elves at Edmonton Meals on Wheels

You Can Make a Difference

Who we are

Edmonton Meals on Wheels is a not-for-profit organization that relies on volunteers to provide nutritious meals and other services which promote health, well being and independence for our clients. For over 40 years we have been serving meals to elderly and housebound residents in Edmonton.

69 % of the people we serve live alone
23% are over 80 years of age.

Often our Edmonton Meals on Wheels volunteer is the only contact our client has with the outside world. Edmonton Meals on Wheels makes it possible for them to live independently in their own homes.

Edmonton Meals on Wheels Christmas Elves Who

Christmas Elves have taken over Edmonton Meals on Wheels. Busy, hard working and eager to help, Christmas Elves are raising funds, working in the kitchen, collecting gifts and wrapping them up. We want you to be one of them!

Christmas at Meals on Wheels

During the holiday season, we serve all our clients a free turkey dinner and deliver a Christmas gift as a wish of goodwill to lift up spirits of those who are alone over the holiday season. Our hope is to remind them that there are people who care and want to help. We remind them of the holiday warmth - the warmth of a hot, homemade dinner and the friendship from a volunteer's smile. There are several ways you can help make this holiday season special for someone:

Donate to Meals on Wheels

Donating to Meals on Wheels ensures our meal programs will continue to assist seniors and homebound residents of Edmonton. The funds you raise will help feed the body and soul of people in our city. It's easy! Instead of doing a gift exchange why not start a collection for a donation or do some Christmas baking and hold a bake sale or a holiday pancake breakfast. Be as creative as you want, the possibilities are endless. Check if your company has a gift matching program to double your donation.

Christmas in the Kitchen

Come in and make the meals that make a difference. Put together a team or come in on your own to help our Red Seal cooks prepare homemade meals in our kitchen. This is a festive and unique opportunity to get your organization involved with the community. Shifts are Monday to Friday from 8:30 a.m. to noon.

***Note: Groups over ten people will be split between two days. All participants must abide the dress code and kitchen safety guidelines.**

Christmas Gift Drive

We make the Christmas season extra special for seniors in Edmonton by accepting unwrapped, new gifts that will be distributed during the holiday season. Be Christmas Elf and help us collect gifts. We can provide you with a collection box and all you need to do is fill it.

We need:

- Blankets
- Toiletries
- Candies and goodies
- Socks
- Edmonton Meals on Wheels gift cards or grocery store gift cards

Christmas Elves Gift Wrapping Open House

We will host a gift wrapping open house where you can be part of the Christmas Elves gift line. Here, you will bag and decorate all the donated gifts for people in your community.

Join us on December 17 from 1 p.m. to 2:30 p.m. to be part of the gift wrapping line. Space is limited, please contact us ahead of time at emow@mealsonwheelsedmonton.org or 780-429-2020 to register.

Sign up today to become an Edmonton Meals on Wheels Christmas Elf!

For more information or to sign up to be a Christmas Elf, contact us at 780-429-2020 or emow@mealsonwheelsedmonton.org.



TOBOGGAN SAFETY



A great past-time winter activity is tobogganing. Did you know that between 2004-2008 410 Albertans suffered an injury?

Here are a **FEW** Safety tips from Alberta Health Services:

- Check the weather and head out on warmer days. If the temperature drops below -19 C, the risk of cold- related injuries such as frost bite and hypothermia increases
- Toboggan in the daylight or on well lit hills.
- Wear a helmet as head injuries can be serious; ski helmets are best because they are designed for use in cold weather and for similar speeds and types of falls
- Wear warm and waterproof hats, mittens or gloves, clothing and boots
- Wear neck warmers instead of scarves and remove drawstrings from children's clothing to prevent strangulation.
- Actively supervise children under 12 years old; this means staying alert, watching for possible hazards and being close enough that you act if needed

Alberta health services web site has more tips – take a look before heading to the hills. <http://www.albertahealthservices.ca/apple/3020.asp>



SNOW SHOVELING FOR SENIORS

VOLUNTEER TO BE A SNOW ANGEL

We live in a winter city and snow is no stranger to Edmontonians. When it snows, City crews clear our roadways and property owners clear their sidewalks, all in an effort to keep Edmonton moving. But for some Edmontonians, particularly seniors and persons with disabilities, moving snow can be difficult and even dangerous. They need your help - they need a Snow Angel. http://www.edmonton.ca/for_residents/awards_certificates/snow-angels.aspx

SENIORS SAVE ON SHOVELLING COSTS



If you are a low income senior please call Alberta Seniors Benefit at 780-644-9992 to see if you qualify for a \$100 a month subsidy to have snow removed from your property.

LENDRUM LIVING November, 2012

Lendrum Playground & Spraydeck

Fundraisers



Thanks so much to all who volunteered and supported our efforts!

The pot is growing!
GO LENDRUM!!



Help us:

- Attract new families into our community
- Retain our property values
- Match an AMAZING playground to our AMAZING green space
- Have somewhere SAFE and GREAT for our kids to play.

We need \$100,000 within this next year so we can get our playground built!

There are many ways to get involved and we are always looking for more hands to help out!
Together, we can do it.

Watch for canvassers coming around the neighbourhood to talk to you about our initiatives!

Call Ron at 780.463.7079 with your idea for a fundraiser or to help us get other fundraisers off the ground!!!

Make a donation for Playground Redevelopment!!!

If every family in Lendrum donated \$100, we would be well on our way!
600 families x \$100 each = \$60,000 WOW!!!

Thanks to the private donations that we have come in so far! It is much appreciated!

We can now issue Tax Receipts for your donations!

To receive a tax receipt for your donation, please make your cheque to "City of Edmonton" and put "Lendrum CL Parkland Development Donation" in the memo line. The City will provide a receipt.

Cheques can be dropped off at 11131 – 55 ave.
Contact Ron at ronandjo@shaw.ca or 780.463.7079 for more information. Thanks!!!
Corporate, individual and monthly donations are welcome.

A Party for our Playground, the 3rd annual Silent Auction

Mark the date for this chance to get some Christmas shopping done, support a community cause and have a visit with your neighbours.

Saturday, November 24th 2012 at St. John the Evangelist Anglican Church, 11111 – 57 Ave
Doors open at 6:45pm, bidding from 7-9pm
Tickets are \$10 per adult, kids are free. Includes a drink and snacks. Purchase tickets in advance!
Limited tickets available at the door.

Some of the items up for auction: Earls Chef's Table!, Sawridge Inn one night stay, dinner and

brunch!, Snow Valley passes!, Southgate gift card!, Handmade quilt!, Nike golf bag!, Nike carry-on suitcase!, Artistic Bakery Gift card!, Christmas Baking!, Bird Feeder Package!, Fountain Tire gift certificate!, UofA Gear!, Oilers photo!, books!



Help us make this a successful event:

Donate goods for gift baskets, gift certificates or services? Your generosity is greatly appreciated. Invite your friends and make this an evening out!

To donate items for the auction contact Liz at tomandliz@shaw.ca
To volunteer or to buy tickets contact Ron or Jo at ronandjo@shaw.ca or 780.463.7079.

All proceeds to Lendrum Playground Redevelopment.
Let's build a playground out of Pennies!!!

Pennies are on the way out... but we still think they are cool! Save your pennies for the playground!!
(We also take nickels, dimes, quarters, loonies, and toonies!)

If you are ready to get rid of them, contact us for a pick-up or bring your coins to the next community event you attend!



Contact Ron or Jo at ronandjo@shaw.ca 780.463.7079

Did you know money you already spend on groceries can help us raise money for our Playground...just by purchasing Sobey's gift cards from us!?!?

Our playground earns up to 10% of the value of all the Sobey's cards you buy from us. That means that for every \$100 you spend at Sobey's, the playground could earn \$10! It adds up.

Name: _____ Phone Number: _____

Email: _____



For your everyday groceries...

	Denomination	Quantity	Dollar Amount
	\$25.00		
	\$50.00		
	\$100.00		
	Total Dollar Amount		
Consider ordering monthly with postdated cheques!			

Fill out this form and drop it off with your cheque made out to **Lendrum Community League** at 11352 – 57th ave. Please do not leave cash in the mailbox!
Ask your friends and family to purchase gift cards though us!

 What about giving Sobey's gift cards for a Christmas or Corporate gift?

Do you donate to the Food Bank at Christmas?
 It can be as easy as writing a cheque for Sobey's cards and calling us to come pick it up.
 We will purchase the cards for you and deliver them to the Food Bank in December.

Email us (giftcards@lendrumliving.com) or call Heather (780.439.1266) or Jo (780.463.7079) with any questions!
 All proceeds to Lendrum Playground Redevelopment.

November 28

Time Travel in the AGA



Pretend to climb aboard the AGA time machine! What was the world like a long time ago? What will it be like in the future? Use your imagination to create worlds that have existed to those that have yet to be discovered. Try to determine what art was like in the past and what it will be like in the future.

**Christmas on the Square
 Holiday Light Up**



Location: Sir Winston Churchill Square
 (100 Street & 101A Avenue, NW)

Free Admission
edmontondowntown.com I 780-424-4085
 Bring the whole family to Edmonton's favourite holiday tradition, the Downtown Business Association's Christmas on the Square Holiday Light Up! The Square comes alive with activities, entertainment for the whole family, and the lighting of the tree!

Classifieds and Services

ATTENTION SENIORS (55+)!!!

PETROLIA SENIORS' GROUP
Invites YOU to come to enjoy

Lunch and a Program (\$12- except December) The
third Tuesdays (not July or August) 11:45 a.m. (sharp)
to 2:00 p.m. at Greenfield Community Hall
3803 - 114 Street

November 20th - RCMP Forensic Investigations
December 4th - Tour of Greenland Garden Centre &
Lunch

December 11th - Turkey Dinner & Christmas
Entertainment (\$18)

January 15th - Zumba Demonstration

In addition enjoy an **extra "outing"** during the
month. For more information or to **CONFIRM** your
attendance

Call: Nick -435-1045 or Betty 434-0711

Malmö School is pleased to present the 3rd Annual:

Malmö Bazaar

Saturday, Dec 1

10am - 3pm

Malmö School, 4716 - 115 St.

Global & Traditional Gifts from Multiple Vendors
Delicious Baking, Candy & Exotic Foods
Hot Dog & Beverage Concession
Beautiful Henna Artistry
Children's Activities



HIGH SCHOOL BIOLOGY & MATH TUTORING

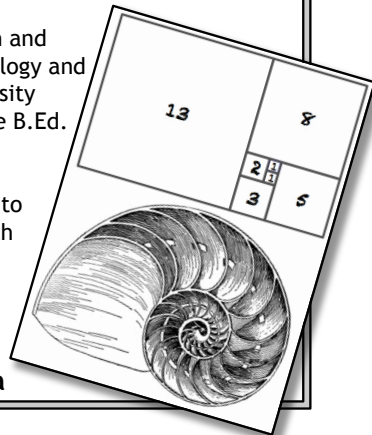
Do you want to boost your grades, get ahead or brush up on your math, biology or science?

Get tutoring from a knowledgeable, dedicated and experienced tutor.

I have 15 years of research and teaching experience in biology and mathematics at the university level. Currently I am in the B.Ed. program at U of A.

I provide tutoring tailored to the needs and goals of each individual student.

Mario Pineda, Ph.D.
780.893.0554
mpineda@ualberta.ca



see

For almost 50 years,

Operation Eyesight has provided sight saving treatment and blindness prevention to millions of people.

We don't just talk about eliminating avoidable blindness. **We're doing it.**

Learn more.

1-800-585-6265
info@operationeyesight.com



www.operationeyesight.com

OPERATION EYESIGHT UNIVERSAL
For All The World To See

Classifieds and Help Wanted

Deependable Inc.

Formally known as the Two Sister House Sitting



Are you hiding from the cold weather?
Are you hiding from the kids?

Whether you are leaving for a few weeks or a few hours I am available to house, pet or child sit.

I am just shy of being fifteen and have completed my babysitting training. I have experience looking after children as young as one year old.

If you are leaving for a vacation, I can shovel walks, pick up mail, or feed animals.

Contact me at 780-439-1266 or hpmd@telus.net
Dena Lamothe

Professional Piano Instruction

- 15 years experience, B.Mus.
- Warm, patient approach with children
- Sound pedagogical and technical background
- Accepting beginner to advanced students
- Significant discounts offered to MYC graduates

McKernan/ University area

780-424-3385 or email kochr97@gmail.com



With: **Dan Skakun**

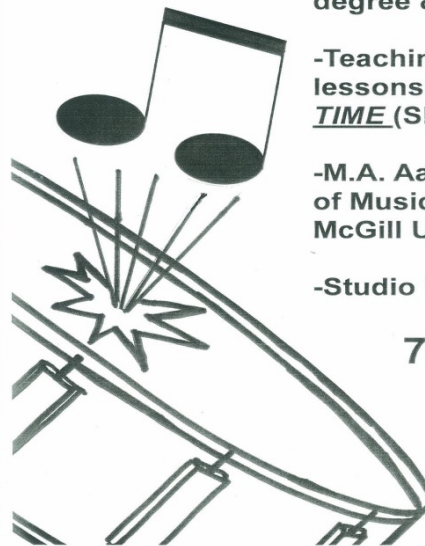
- Currently teaching drums for MacEwan University's degree & diploma programs.

-Teaching private drum lessons for a **REALLY LONG TIME** (SINCE 1981)!

-M.A. Aaron Copland School of Music (N.Y.), B. Mus. McGill University...and more!

-Studio in Parkallen!

780-436-5024



THE WAY WE GREEN

Be cool! Save a Joule!
Install a programmable thermostat.

www.edmonton.ca/co2re



Space Available...
Check our website for rates & details

www.lendrumliving.com

Community League Membership

Valid through August 31/13
 Complete this form and drop it with your cheque (\$25.00 or \$10.00—Seniors) (payable to Lendrum Community League)

Jessica Stewart
 11135-57th Ave
 T6H 0Z7

Or Call 780-691-9071

Your membership card and receipt will be mailed or delivered to your home.

Thank you for your support !!!

Name: _____

Address: _____

Postal Code: _____ Phone: _____

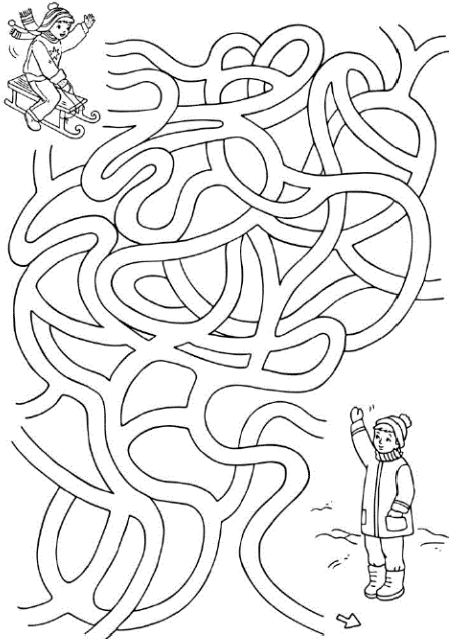
Email: _____

Willing to Volunteer: _____

Number of Adults in household: _____

Number of children in household: _____

Number of skate tags required: _____



Lendrum Community League 2012-13 Executive & Contacts

President:	Vacant	
Vice-President:	Vacant	
Past President:	Bill Fish	(780) 437-6794
Treasurer:	Dale Somerville	(780) 434-1032
Secretary:	Danielle Gajewski	(780) 989-0782
Programs:	Gary Goulden	(780) 450-0927
Casino:	Gord Okamura	(780) 435-2973
Civics:	Ray Benton-Evans	(780) 756-5402
	Joanne Ellison	(780) 437-5402
	Gail Faurshou	(780) 436-4361
	(Vacant)	
Fundraising Memberships:	Jessica Stewart	(780) 691-9071
Social:	(Vacant)	
Soccer:	Xanthe Loyer	(780) 433-3627
	Jo Grelowski	(780) 463-7079
Volleyball:	Lance Adamson	(780) 438-9168
Athletic Park:	Harvey Guhl	(780) 438-8226
Community Gardner	Bonnie Herring-Cooper	(780) 431-9513
Playground Devlop:	Ron Grelowski	(780) 463-7079
Building Rentals:	Neil Moir	(780) 263-0701
Ice Rink:	Gary Goulden	(780) 450-0927
	Gary Yaskowich	(780) 432-1029
	John Porter	(780) 438-1896
Lendrum Sign	Luke Falkenstein	(780) 431-0752
Newsletter/Web:	Harvey Guhl	(780) 438-8226
Information Systems	Daryle Tilroe	(780) 439-4734
Newsletter Dist:	Catherine Stout	(780) 436-7179
Neighborhood Watch:	Shannon D.	(780) 428-8135
	Carol Allen	(780) 434-1294
CRC Rep (City of Edm)	Michael Goth	(780)

Check www.lendrumliving.com for a full list of email addresses

We Need your Help... Volunteer Today!!!

Next Community League Meeting
 1st Monday of the month...
 7:00-9:00pm at the hall

Advertising in the Lendrum Newsletter: No charge: classified ads from Lendrum residents, ads from non-profit organizations benefiting the Lendrum area. **Paid ads:** all other ads – business card \$10; 1/4 page \$20; 1/3 page \$30; 1/2 page \$40; full page \$80 (sizes are approximate). Most Mac or PC files usable, please allow enough time to verify your file is print ready . Payment to be made to Lendrum Community League (POBox 4570, T6E 5G4) Edm, Ab. **Note:** if you ever have a problem with the delivery of an issue of Lendrum Living, please contact Catherine, our Distribution Coordinator, at 436-7179. (Dist. Of 750 Newsletters each month) **Note: Deadline for the next issue is the first of that month. Distribution Begins mid month.** Submissions can be sent to newsletter@lendrumliving.com..... Back issues can be found at our web site.

www.lendrumliving.com